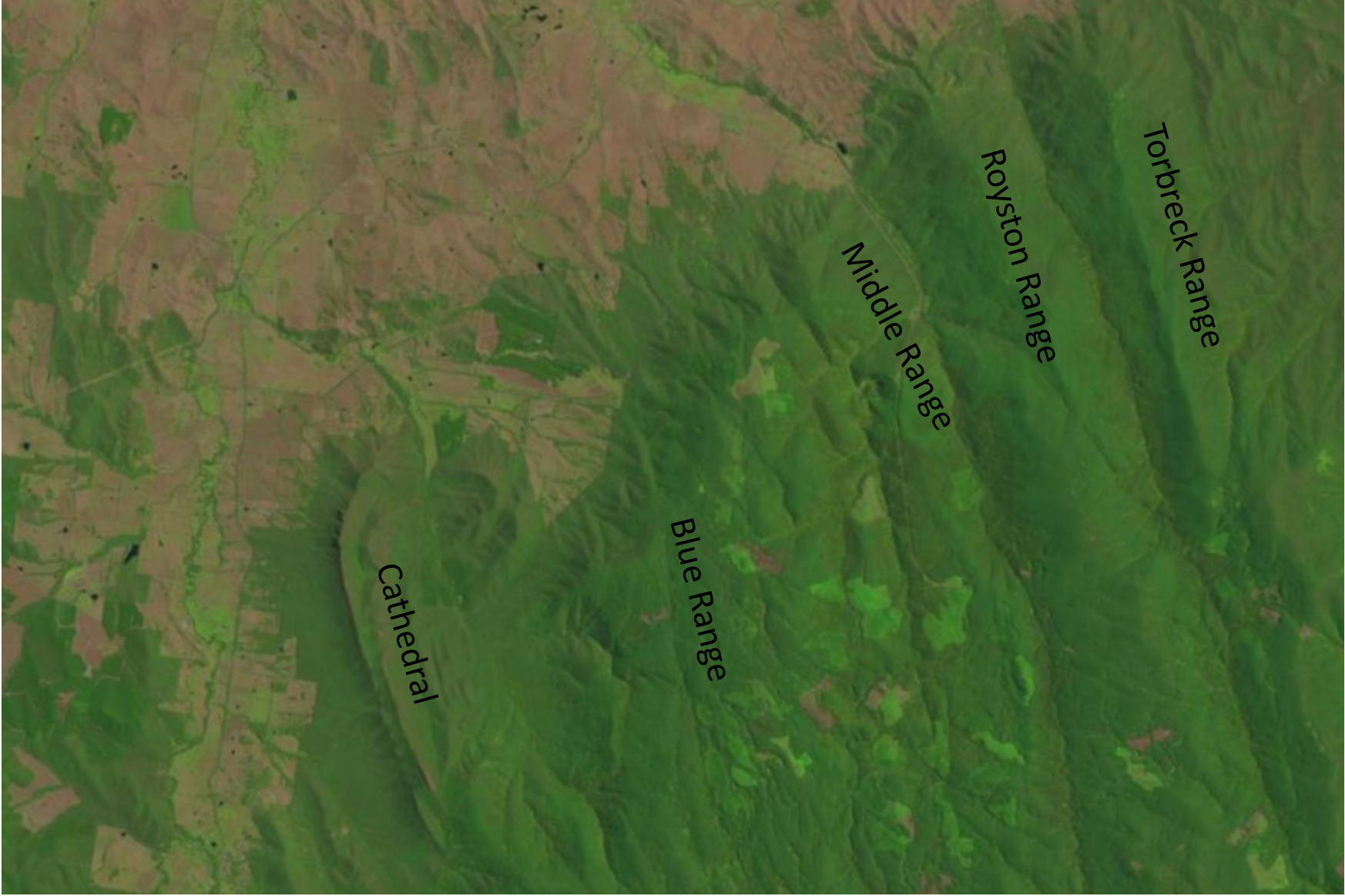


# Land Sat Images 2000-2016

Assembled by the Rubicon Forest Protection Group



Cathedral

Blue Range

Middle Range

Royston Range

Torbreck Range



Jan 2000

This is an aerial photograph showing a landscape with a prominent green valley and brown hillsides. The green areas are concentrated in the lower elevations, while the brown areas are on the higher slopes. The terrain appears to be a mix of forested and cleared land. A white rectangular box in the upper right corner contains the text "Jan 2000".



April 2000





Mar 2001



An aerial photograph showing a dense forest of green trees. The forest is divided into several distinct, roughly rectangular blocks by narrow, light-colored paths or roads. The overall appearance is that of a well-managed plantation or a forest with clear boundaries. A white rectangular box is overlaid in the upper right quadrant of the image, containing the text "Sept 2001".

Sept 2001

An aerial photograph showing a landscape with a mix of green vegetation and brown soil. The terrain appears to be a valley or a series of ridges and valleys. The green areas are concentrated in the lower parts of the valleys, while the brown areas are more prominent on the higher slopes and ridges. The overall appearance is that of a semi-arid or arid region with some green cover. A white rectangular box in the upper right corner contains the text "Mar 2002".

Mar 2002





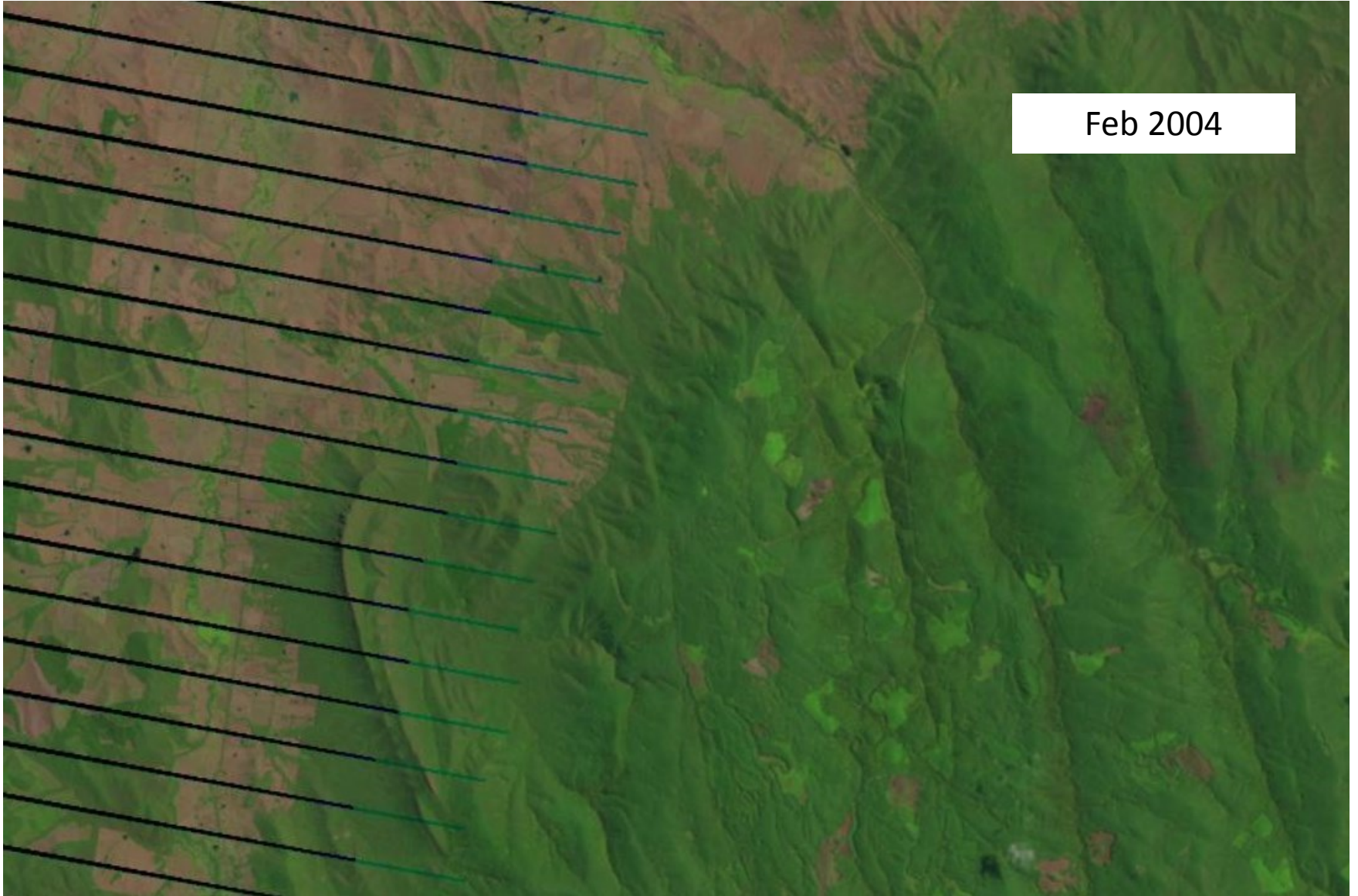
May 2002





Nov 2003

Feb 2004



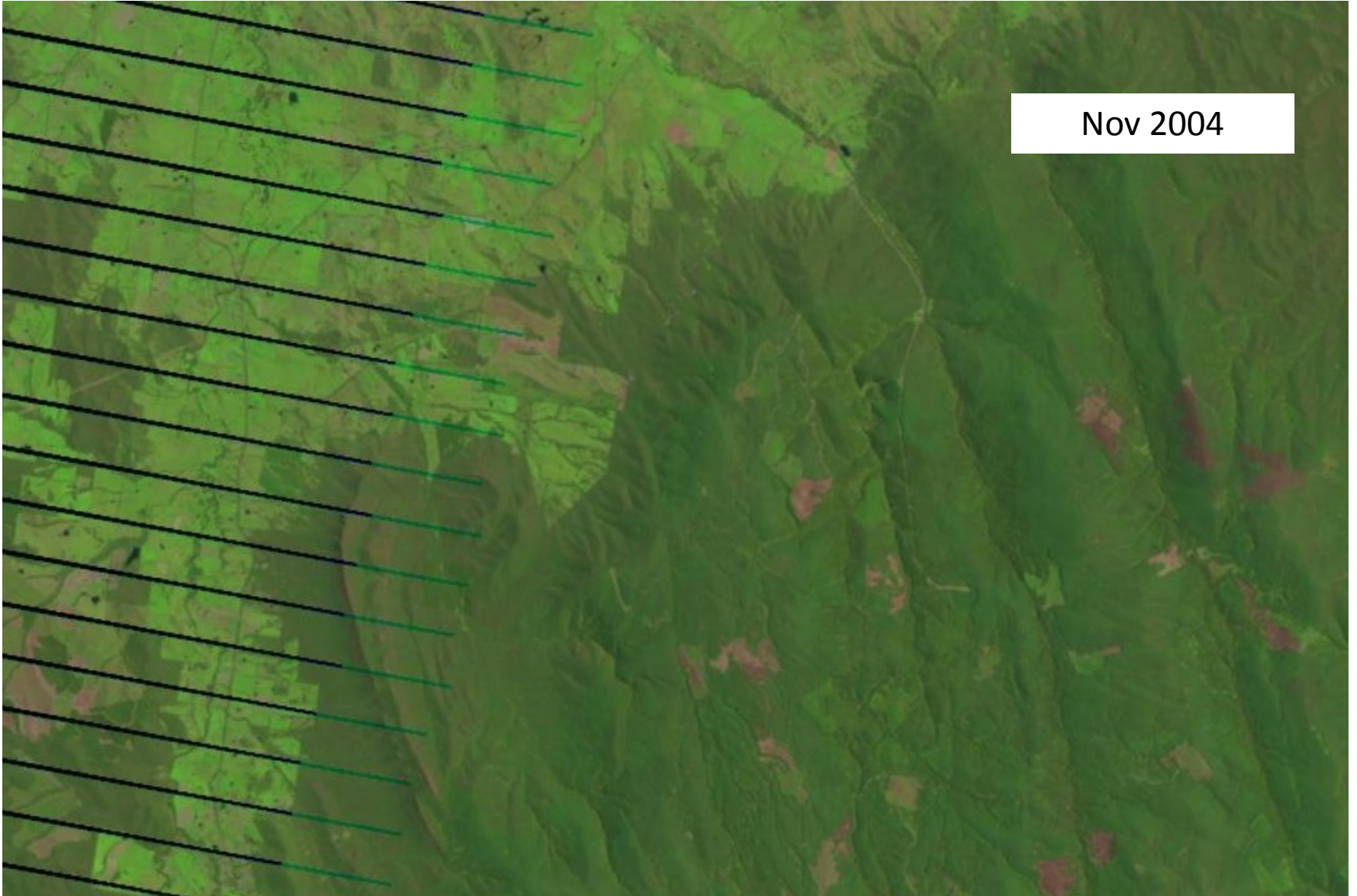


Apri 2004

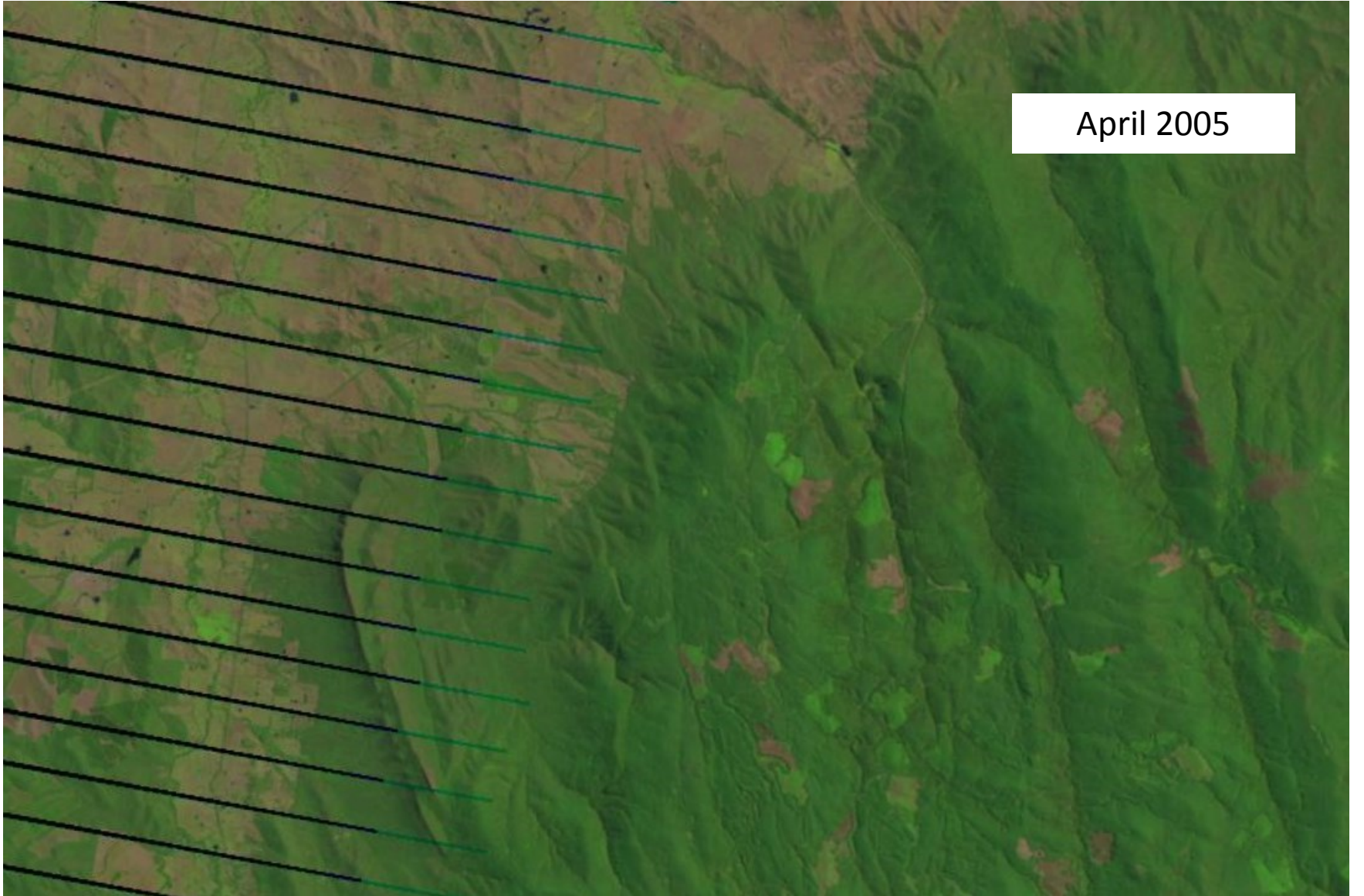




Nov 2004



April 2005



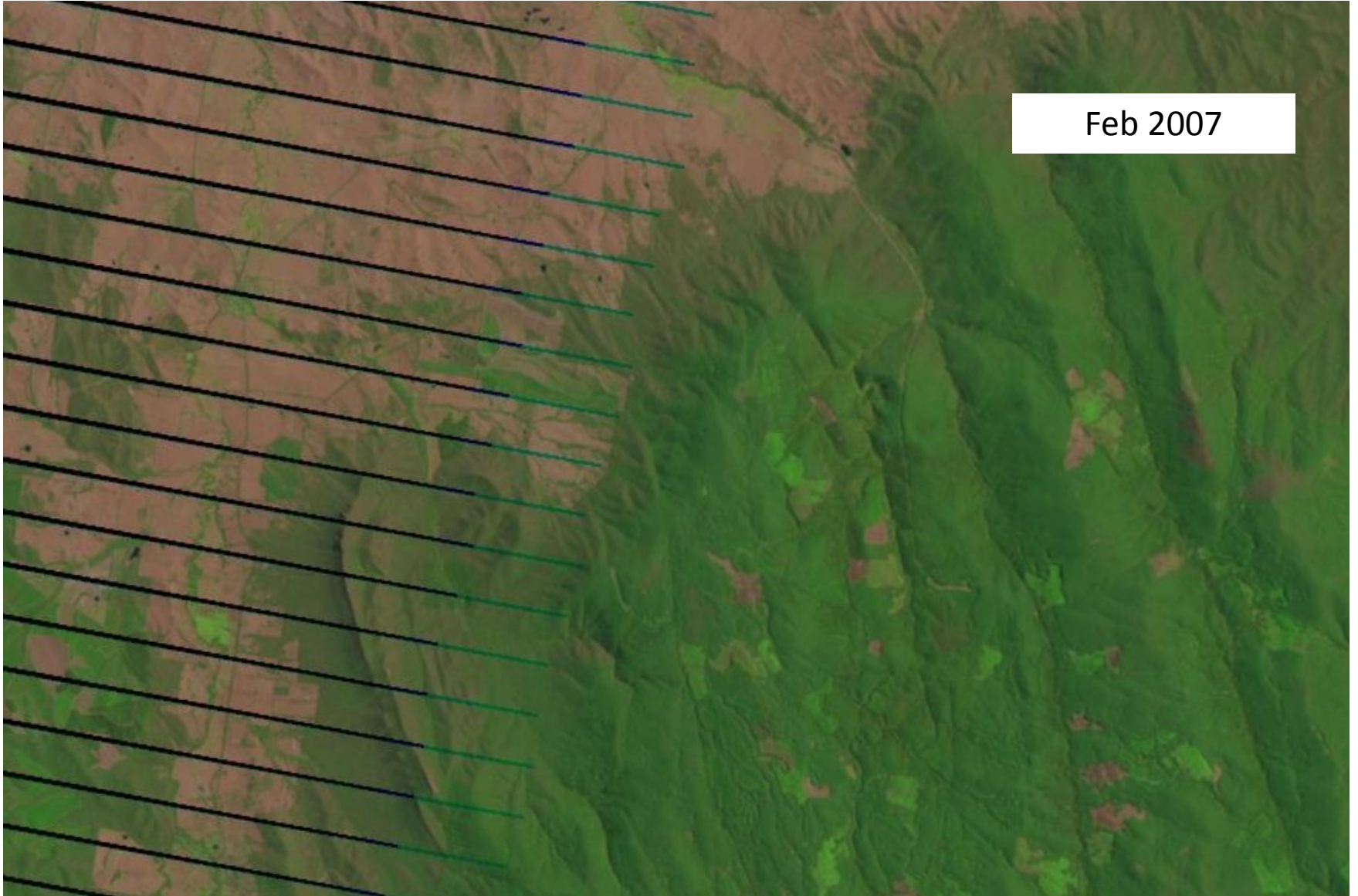




Mar 2006



Feb 2007



April 2007



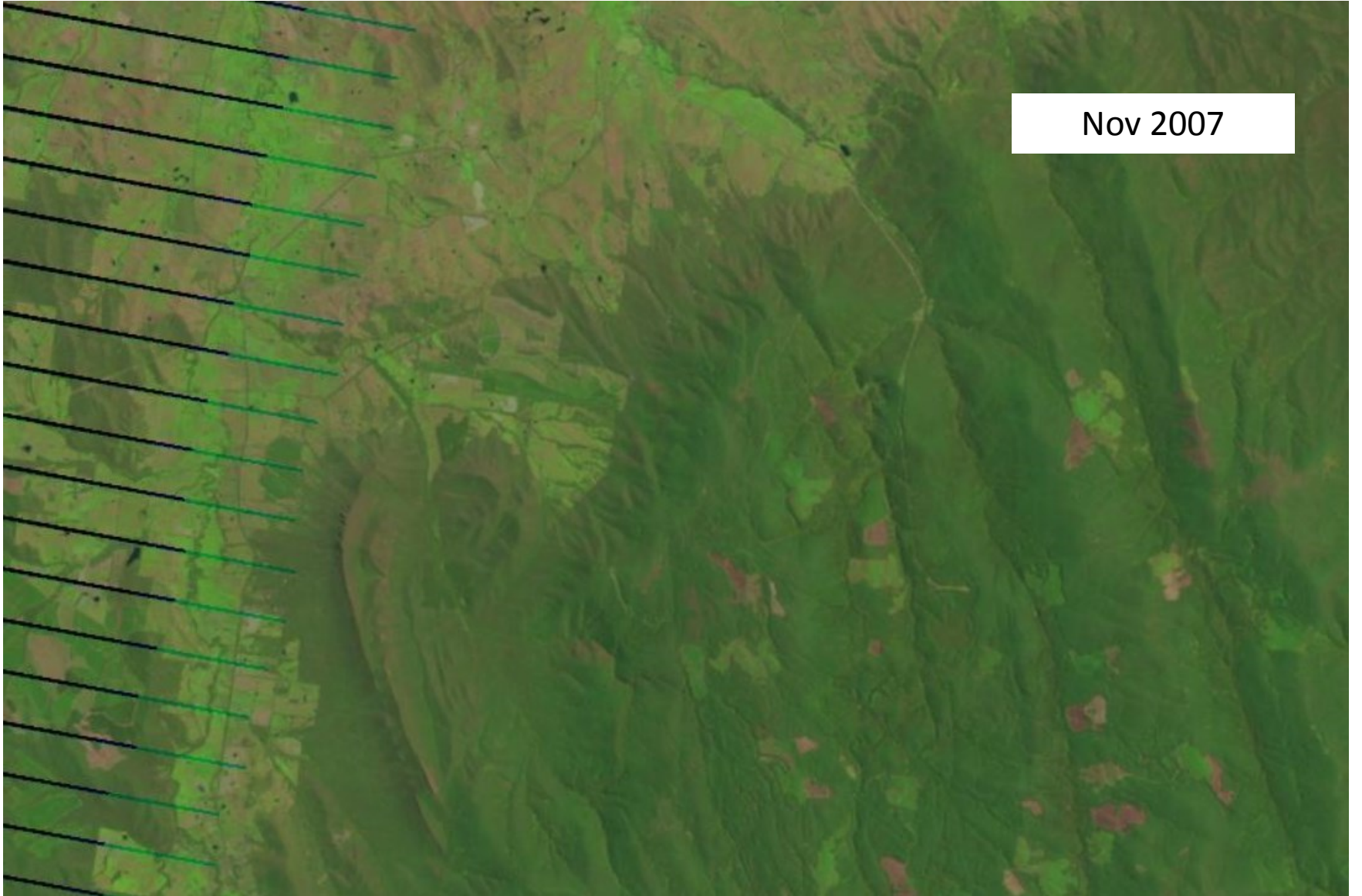




May 2007



Nov 2007



Sept 2008





Mar 2009

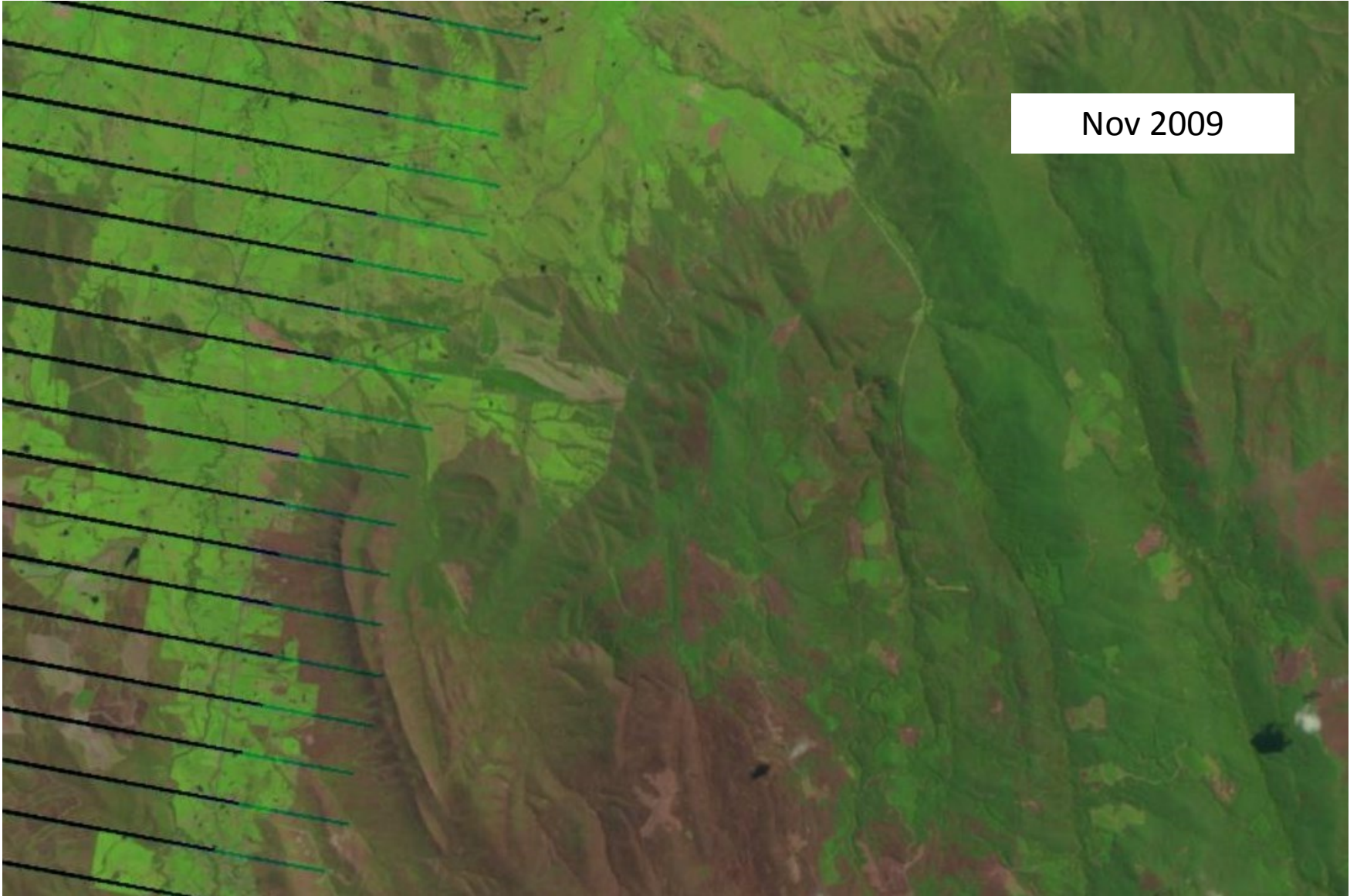


Sept 2009

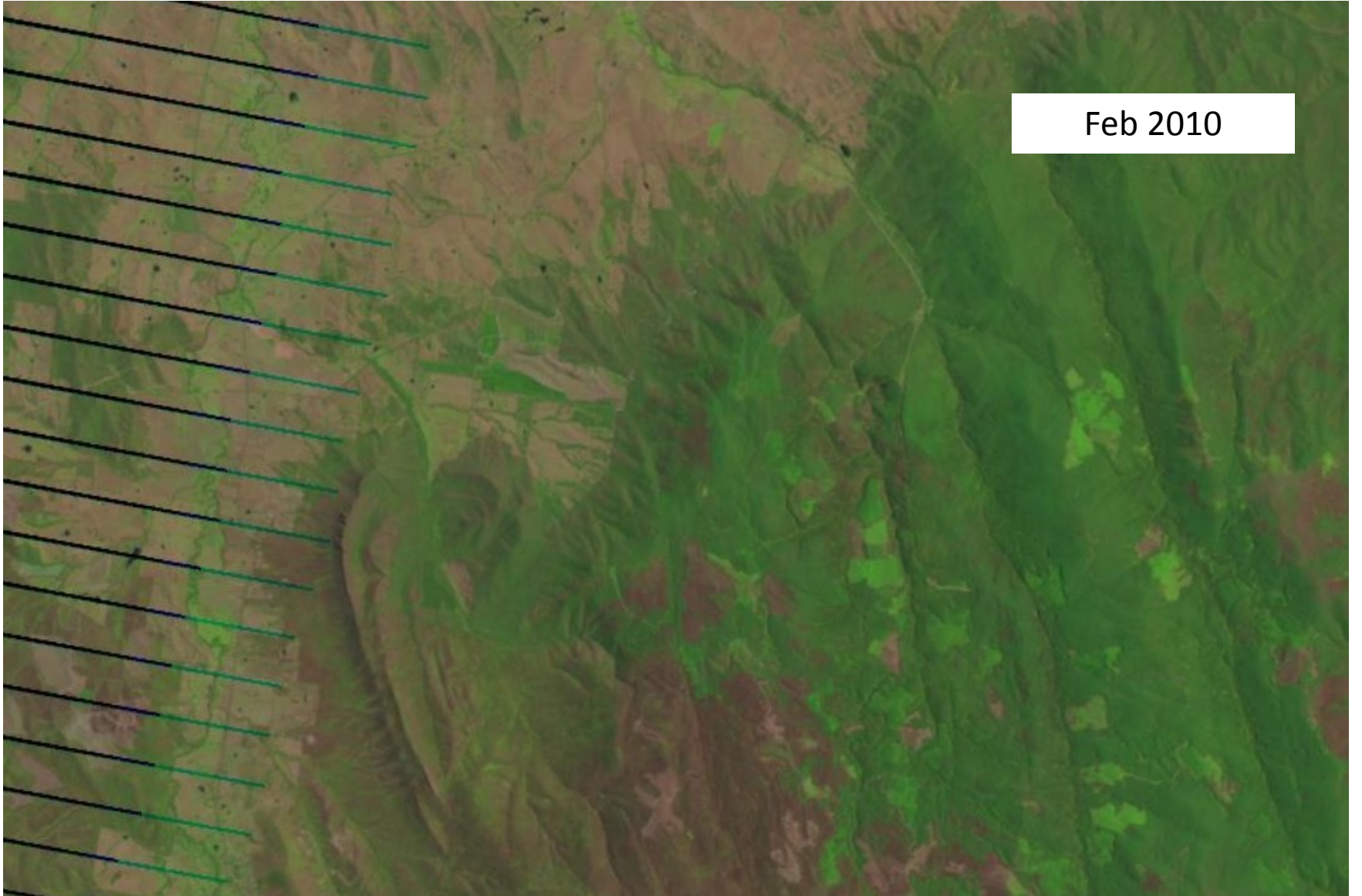




Nov 2009



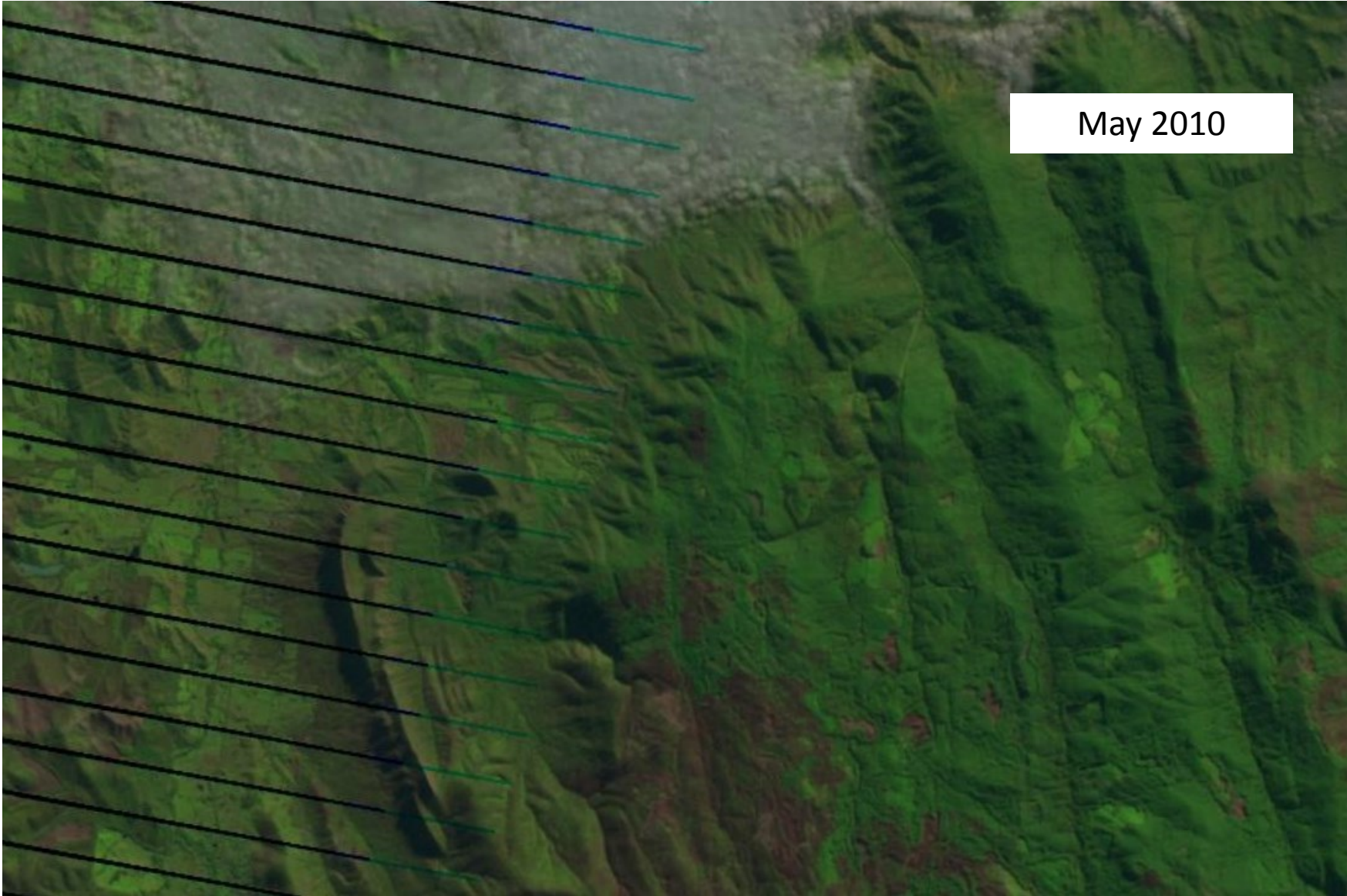
Feb 2010





Mar 2010

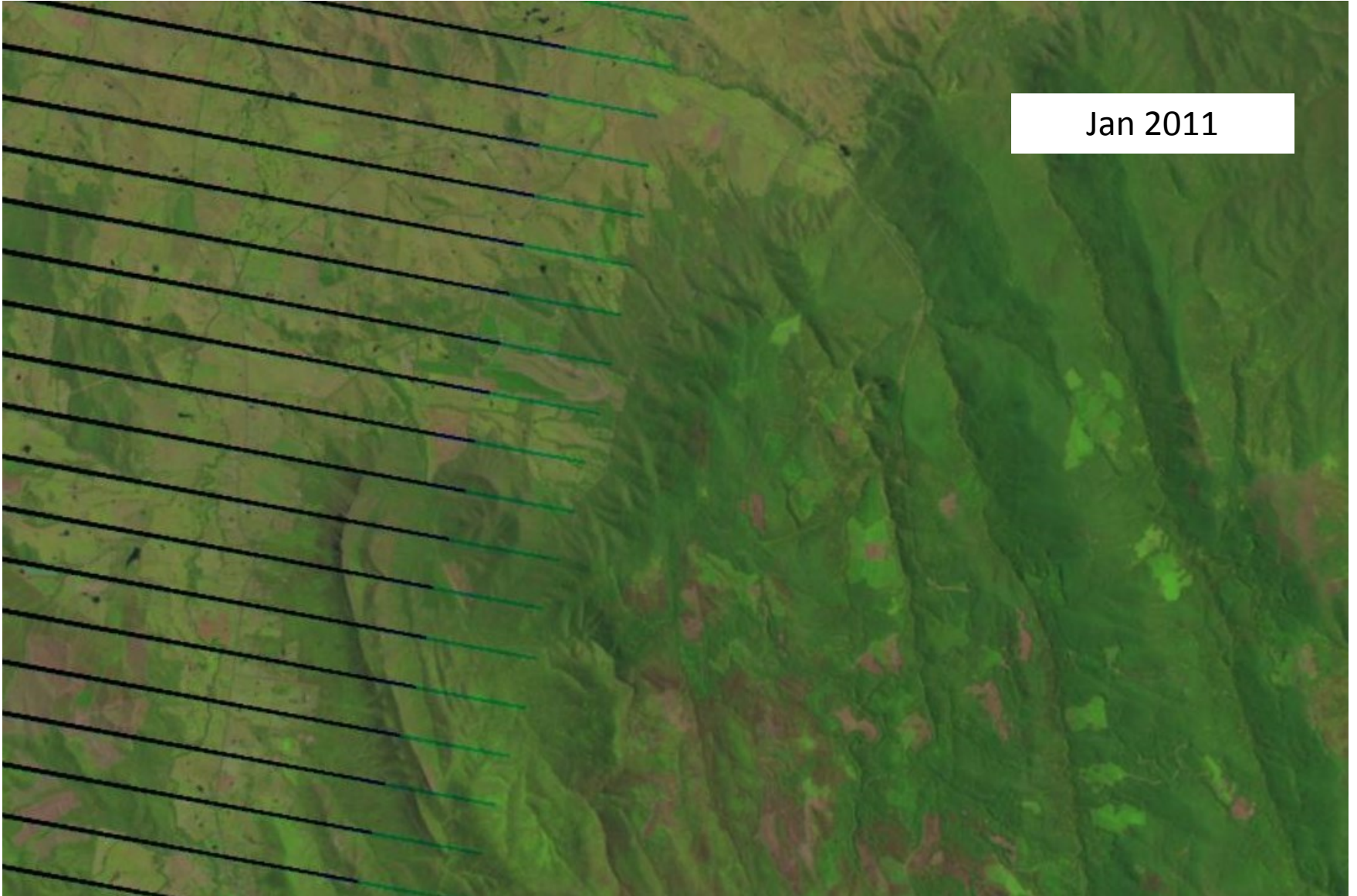




May 2010



Jan 2011

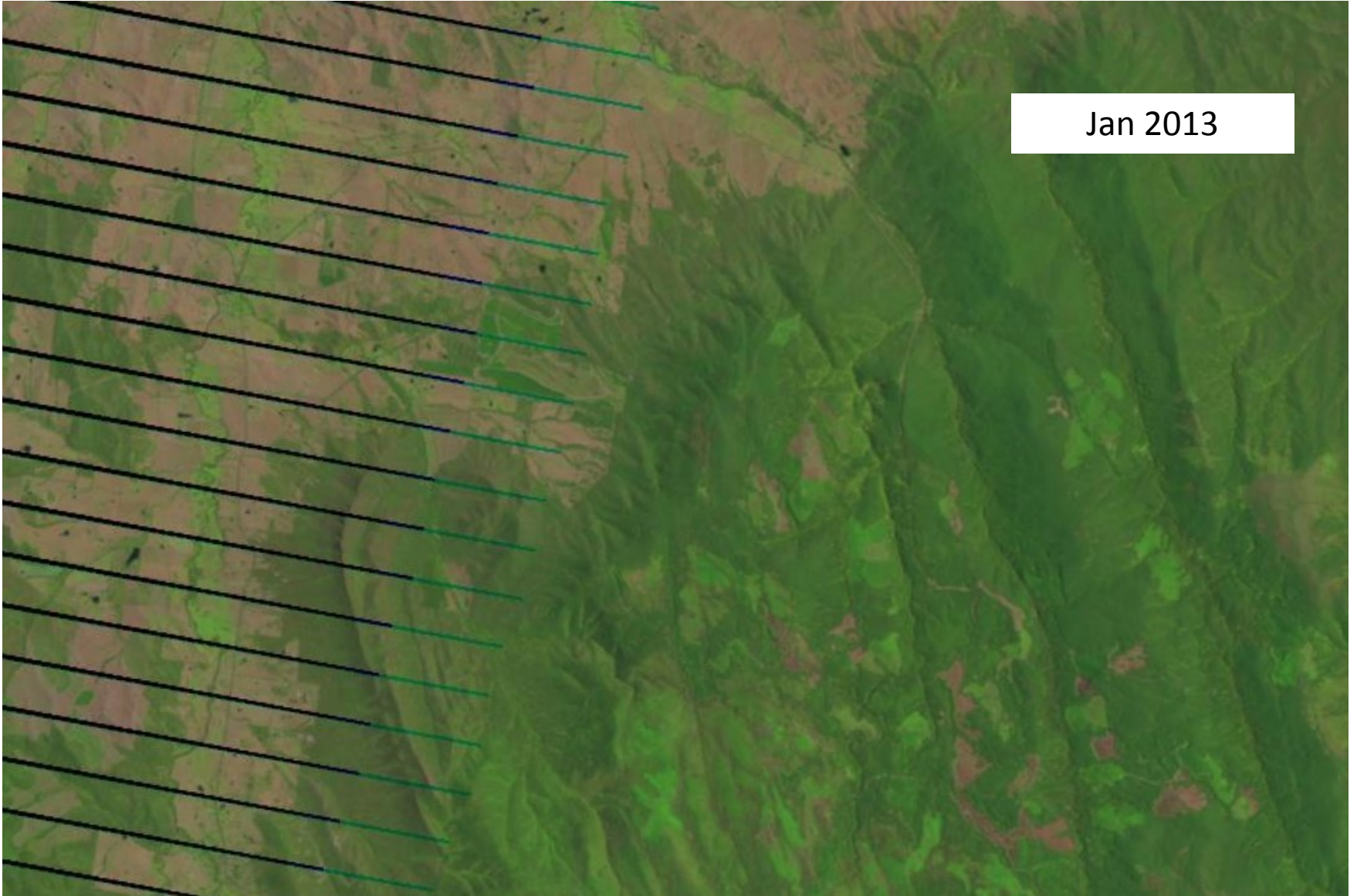



Sept 2012





Jan 2013

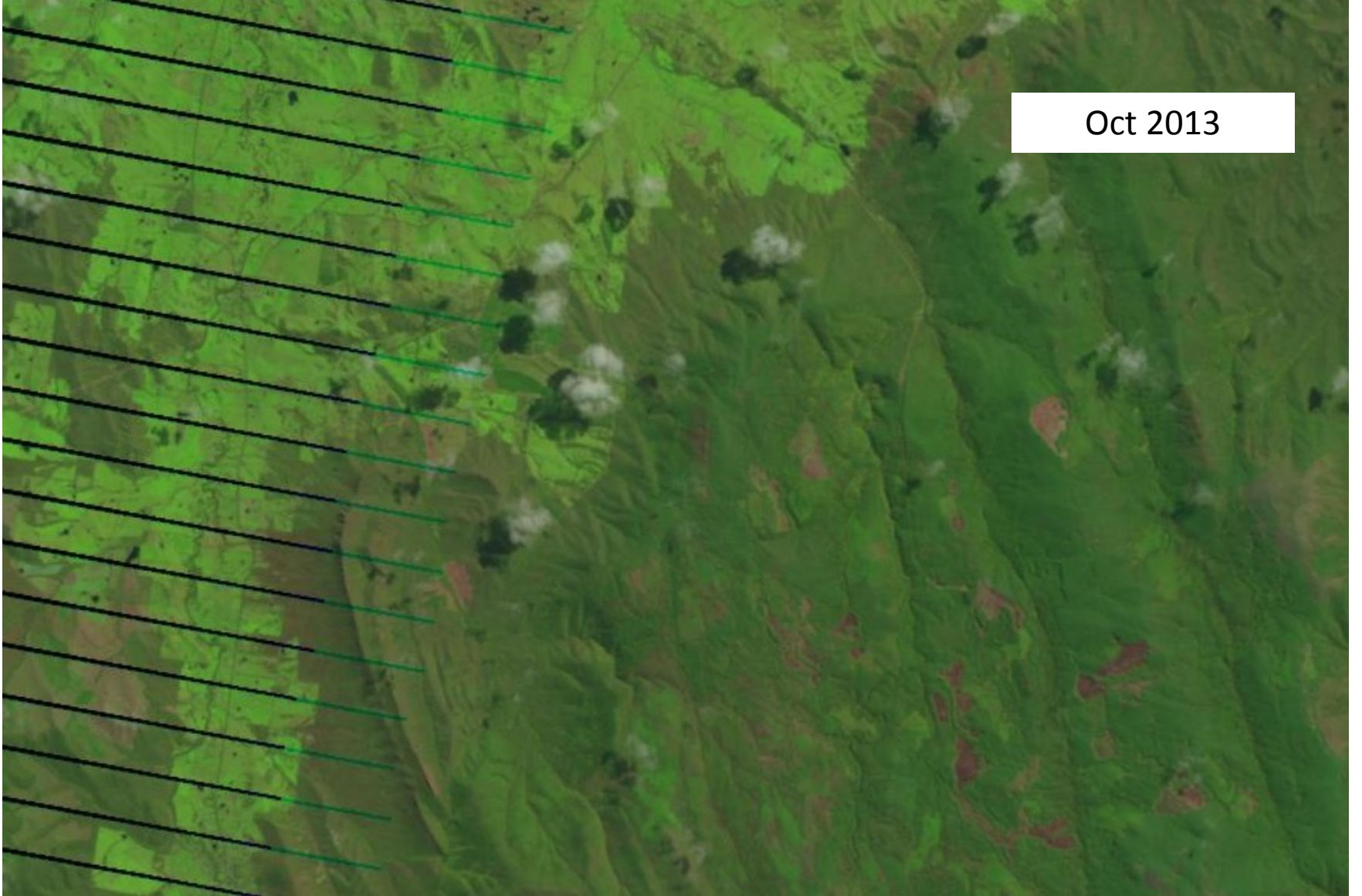


An aerial photograph of a mountain range, likely in the Pacific Northwest, showing dense green forest covering the rugged terrain. The mountains are characterized by sharp ridges and deep, narrow valleys. The forest appears to be a mix of coniferous and deciduous trees. A white rectangular box in the upper right corner contains the text "June 2013".

June 2013




Oct 2013



An aerial photograph showing a landscape with a mix of green vegetation and brown soil. The terrain appears to be a valley or a series of ridges and valleys. The green areas are dense and cover most of the lower slopes and valleys, while the brown areas are more prominent on the higher slopes and in some central areas. The overall appearance is that of a natural, possibly forested or scrubland, environment. A white rectangular box in the upper right corner contains the text "Jan 2014".

Jan 2014





March 2014

This is an aerial photograph showing a landscape with a mix of green vegetation and brown soil. The terrain appears to be a valley or a series of ridges and valleys. The green areas are concentrated in the lower elevations and along the ridges, while the brown soil is more prominent in the higher elevations and in some of the valleys. The overall appearance is that of a semi-arid or arid region with sparse vegetation. The date 'March 2014' is displayed in a white box in the upper right corner of the image.




Oct 2014





Dec 2014

An aerial photograph showing a landscape with a mix of green vegetation and brown soil. The terrain appears to be a valley or a series of ridges and valleys. The green areas are concentrated in the lower parts of the valleys, while the brown areas are more prominent on the higher ground. The overall appearance is that of a semi-arid or arid region with some green cover. A white rectangular box in the upper right corner contains the text "March 2015".

March 2015




May 2015



An aerial photograph of a mountainous region, likely in the Himalayas, showing a complex network of ridges and valleys. The terrain is covered in dense green vegetation, with some areas appearing brownish, possibly due to deforestation or natural clearing. A white rectangular box in the upper right corner contains the text "Sept 2015".

Sept 2015



An aerial photograph showing a landscape with a mix of green vegetation and brown soil. The terrain appears to be a valley or a series of ridges and valleys. The green areas are dense and cover most of the lower slopes and valleys, while the brown areas are more prominent on the higher slopes and in some central areas. The overall appearance is that of a natural, possibly forested or semi-forested, landscape. A white rectangular box is overlaid in the upper right corner of the image, containing the text "Feb 2016".

Feb 2016



April 2016