



Rescue the Rubicon



Presenters

Ken Deacon

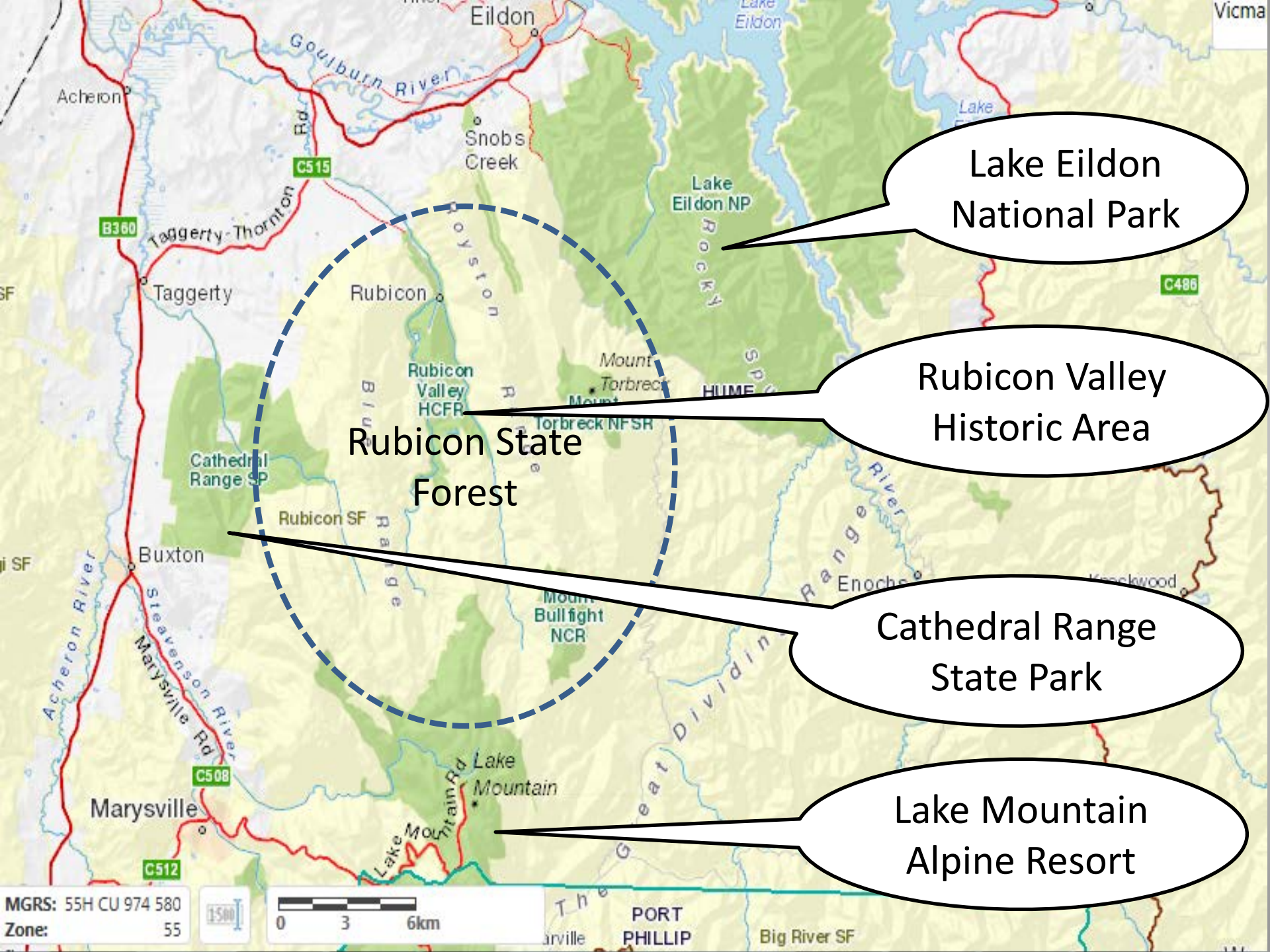
Nick Legge

Ann Jelinek

4 October 2017

Rubicon State Forest

- Rich biodiversity
- Remarkable history & cultural values
- Amazing volcanic origins
- Scenic beauty and expansive vistas
- Exceptional tourism opportunities



Lake Eildon National Park

Rubicon Valley Historic Area

Rubicon State Forest

Cathedral Range State Park

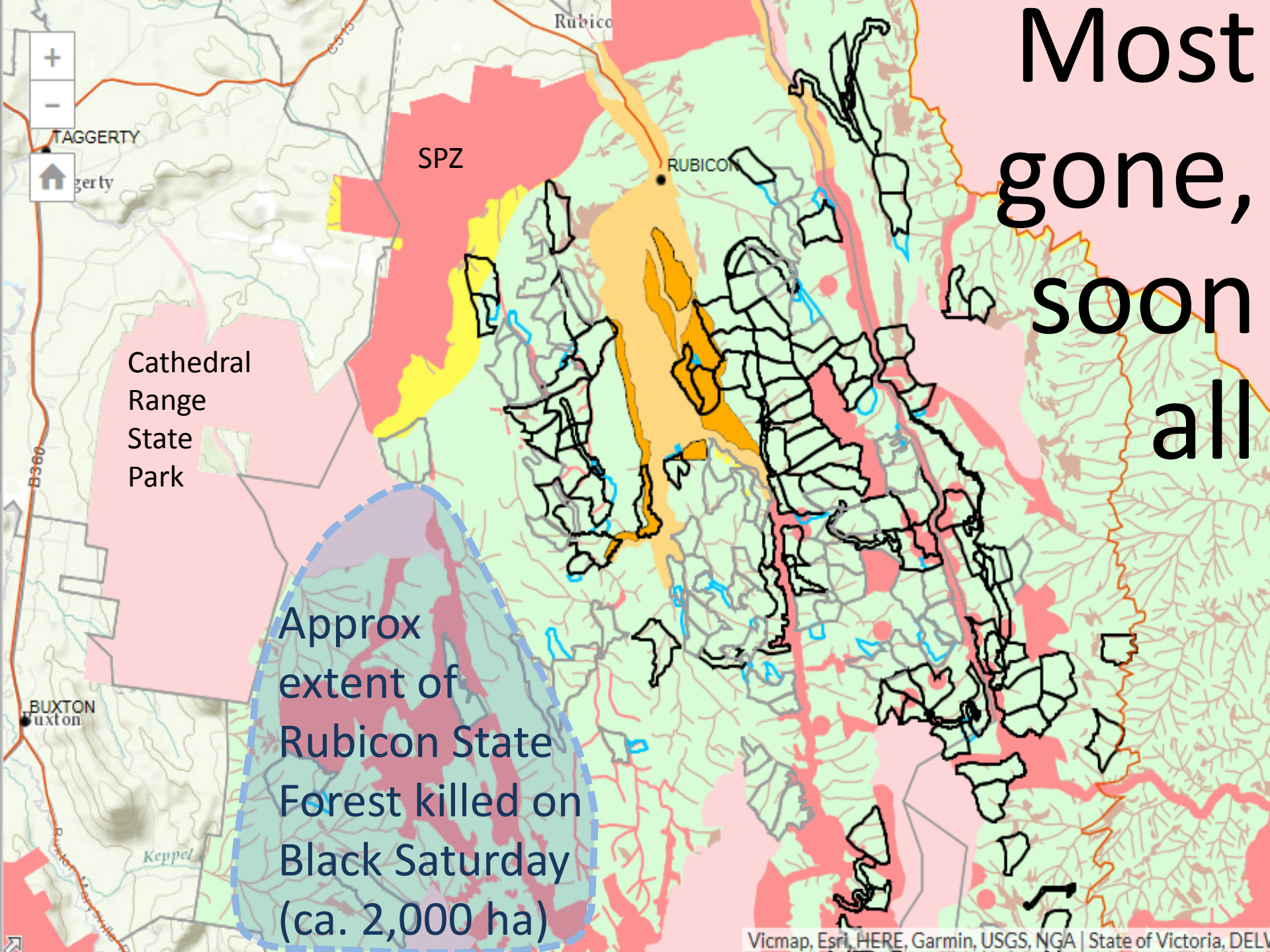
Lake Mountain Alpine Resort

MGRS: 55H CU 974 580
Zone: 55

0 3 6km

PORT PHILLIP
Big River SF

Most
gone,
soon
all



Approx
extent of
Rubicon State
Forest killed on
Black Saturday
(ca. 2,000 ha)

What has happened

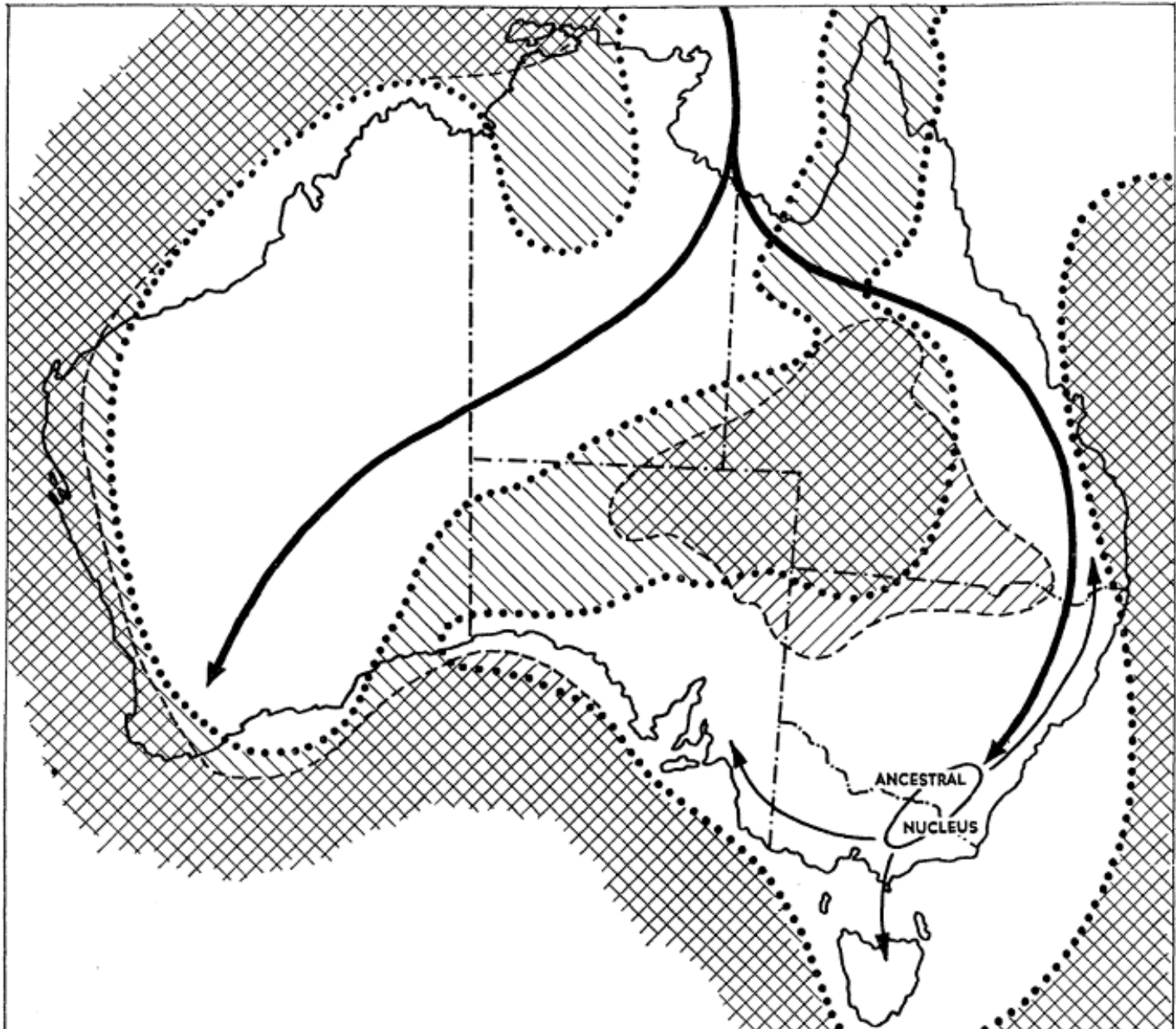
- Extensive loss of wildlife habitat (fires plus logging)
- Gigantic mega-coupes
- Serious erosion
- Rubicon historic area logged
- Landscapes lost – incl. protected
- Blackberries rampant

Vanishing wildlife habitat

Extensive loss of wildlife habitat from fires and accelerated logging. Threatened animals recorded in the Rubicon State Forest include:

		last recorded
endangered	leadbeaters possum	2017
	<i>spot-tailed quoll</i>	2001
	<i>broad-toothed rat</i>	1989
	barred galaxias	2016
vulnerable	greater glider	2012
	sooty owl	2012
	powerful owl	2012
near-threatened	<i>murray spiny crayfish</i>	2000
	eastern pygmy possum	2016

Centre of Australian caddisfly diversity





01landsat Jan 2000



04landsat Mar 2001



06landsat Mar 2002



11landsat Apr 2004



13landsat Apr 2005



15landsat Mar 2006



17landsat Feb 2007



22landsat Sep 2008



25landsat Sep 2009



28landsat Mar 2010



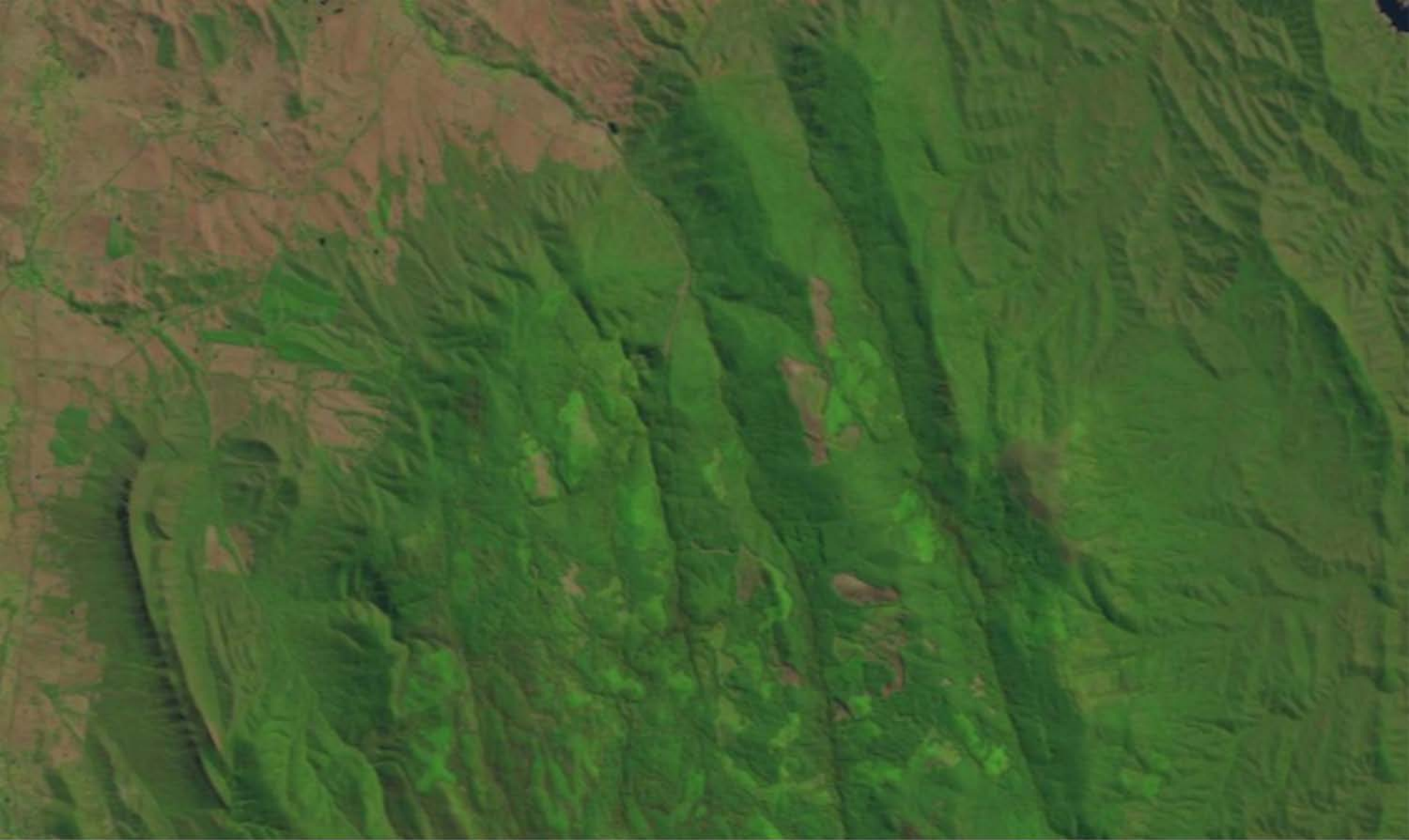
30landsat Jan 2011



32landsat Sep 2012



37landsat Jan 2014



41landsat Mar 2015



45landsat Feb 2016

Revise Code of Forest Practice

- Smaller coupes
- No mega-coupes
- Bigger coupe buffers
- Proper pre-logging flora and fauna surveys
- Strengthen erosion protection
- Designate scenic roads and vantage points
- Better protection of retained trees
- Strengthen rainforest protection
- Control invasive species

Gigantic
mega-
coupes

Discontinuous
buffer

Buffer only
10m wide

Hobin Gap
group
(3km long,
227 ha)

© 2017 Google

Image © 2017 CNES / Airbus

Imagery Date: 10/27/2015

37°23'19.24" S 145°54'29.65" E elev 1241 m

2010

875 m



Erosion in an active coupe



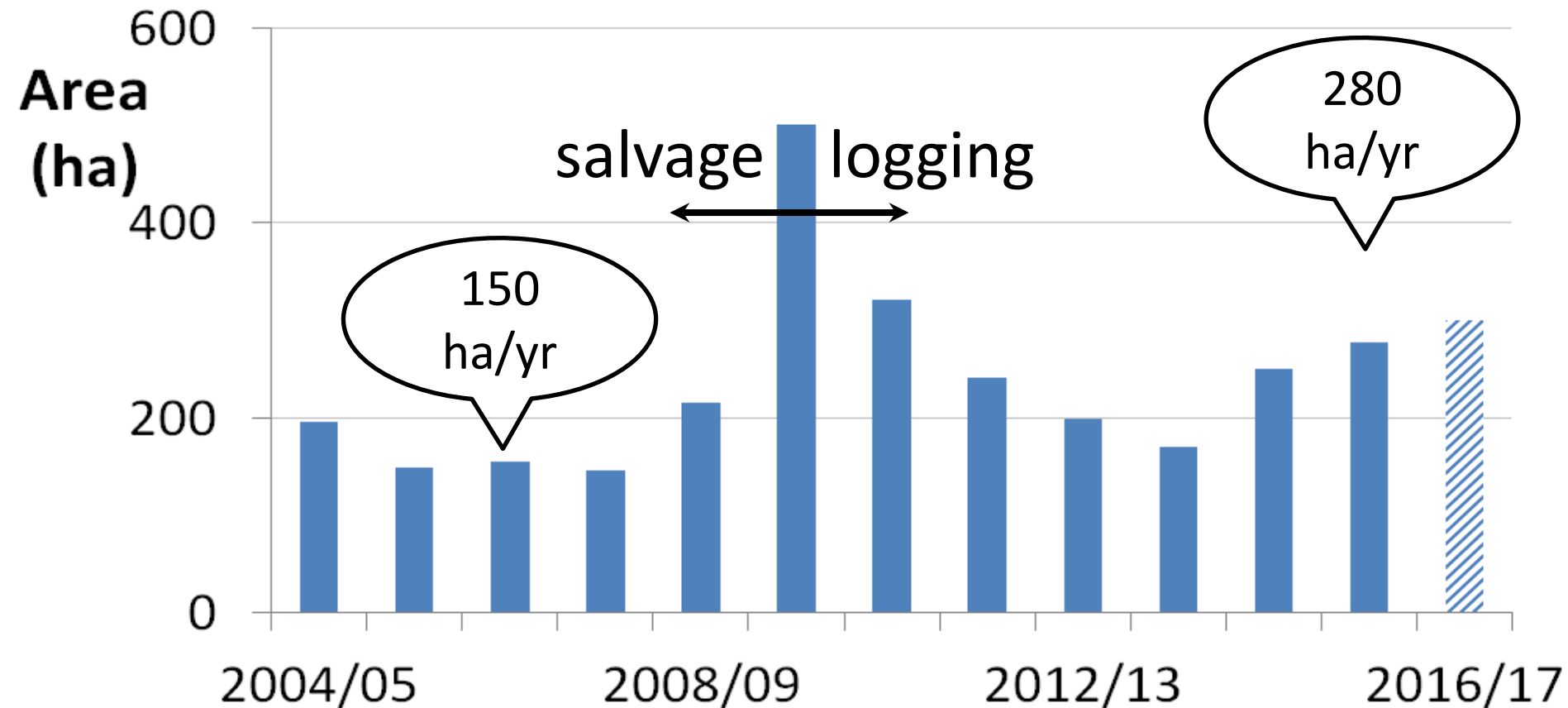


The rest soon to go

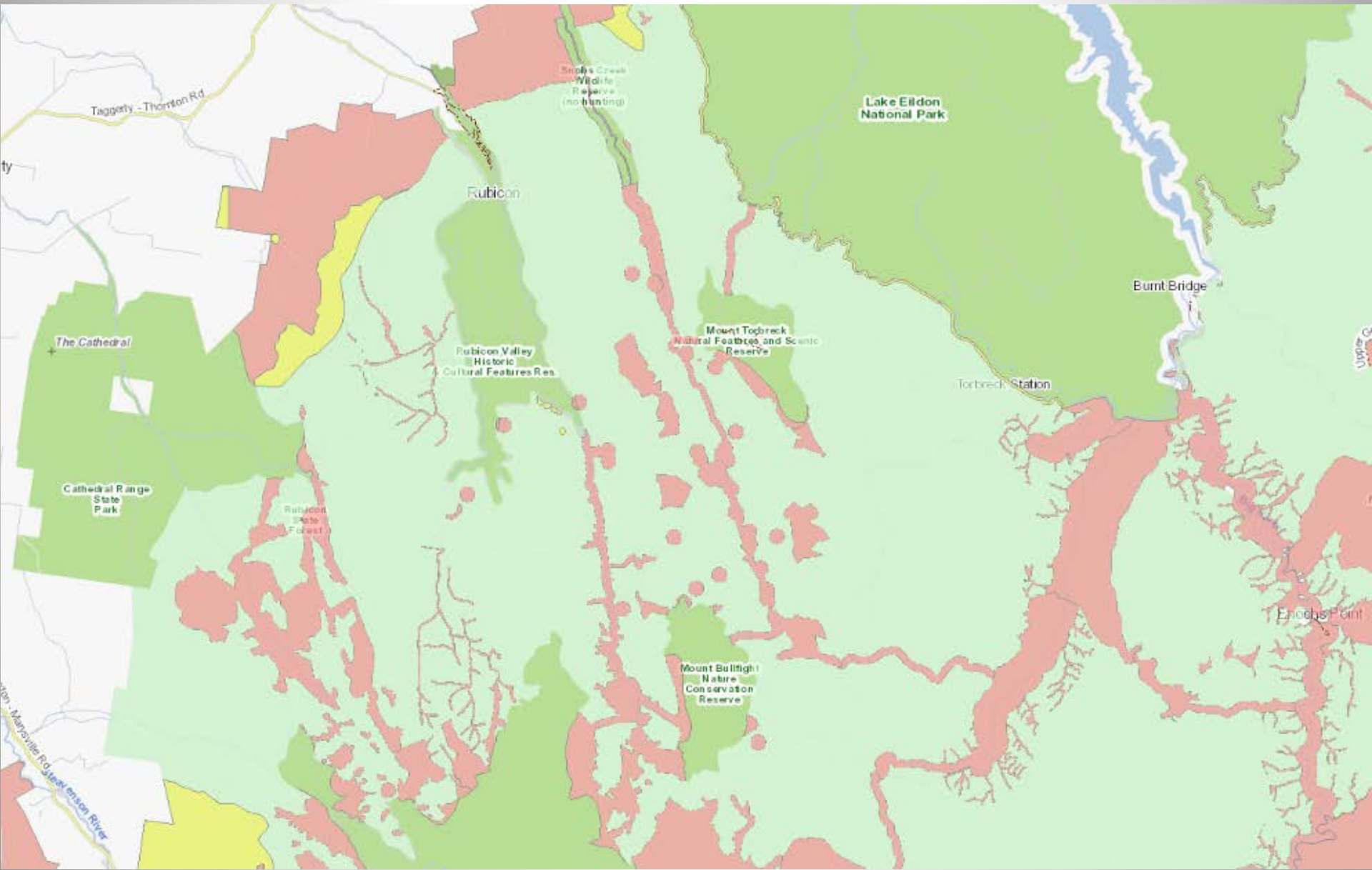




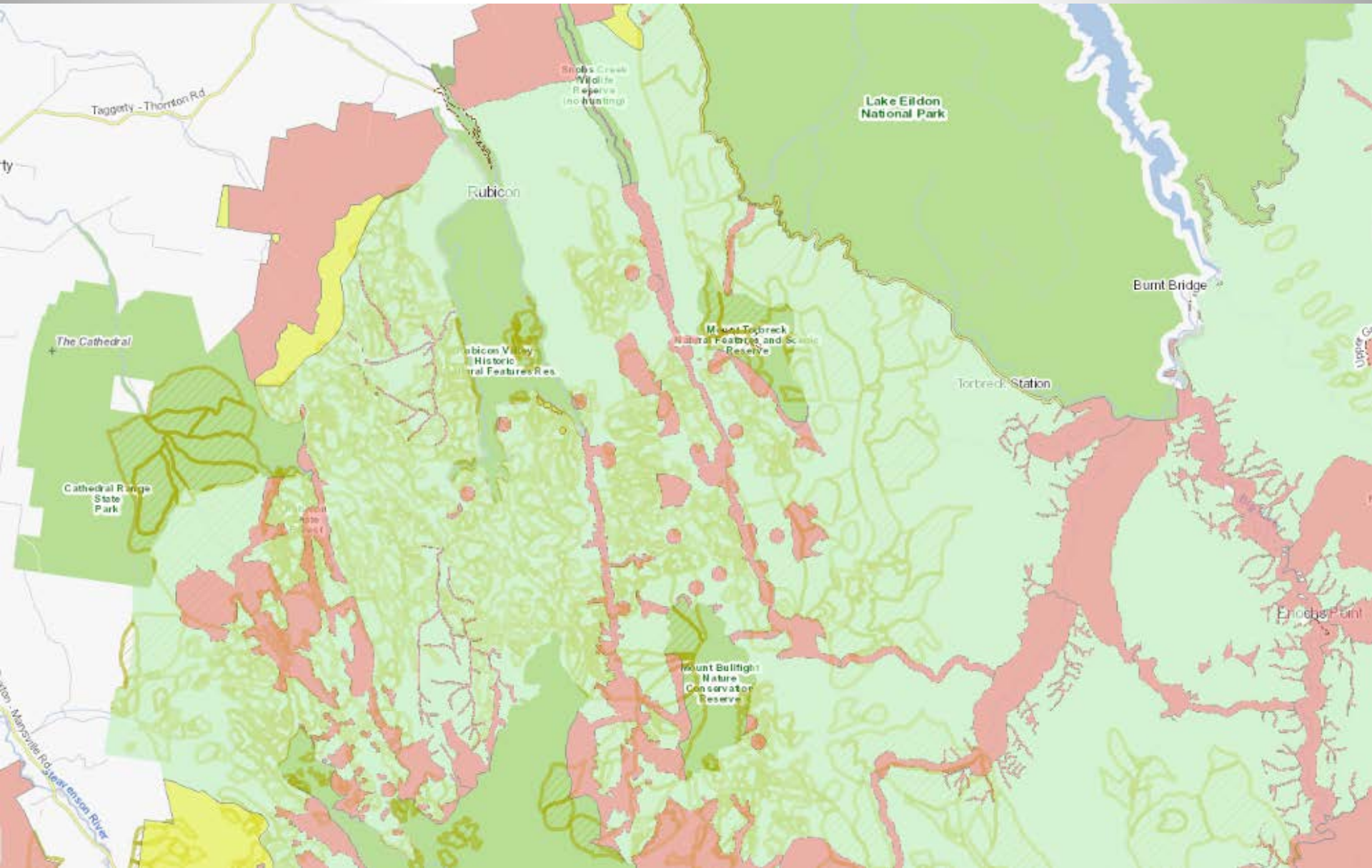
Unsustainable! Rubicon logging doubled despite fire losses



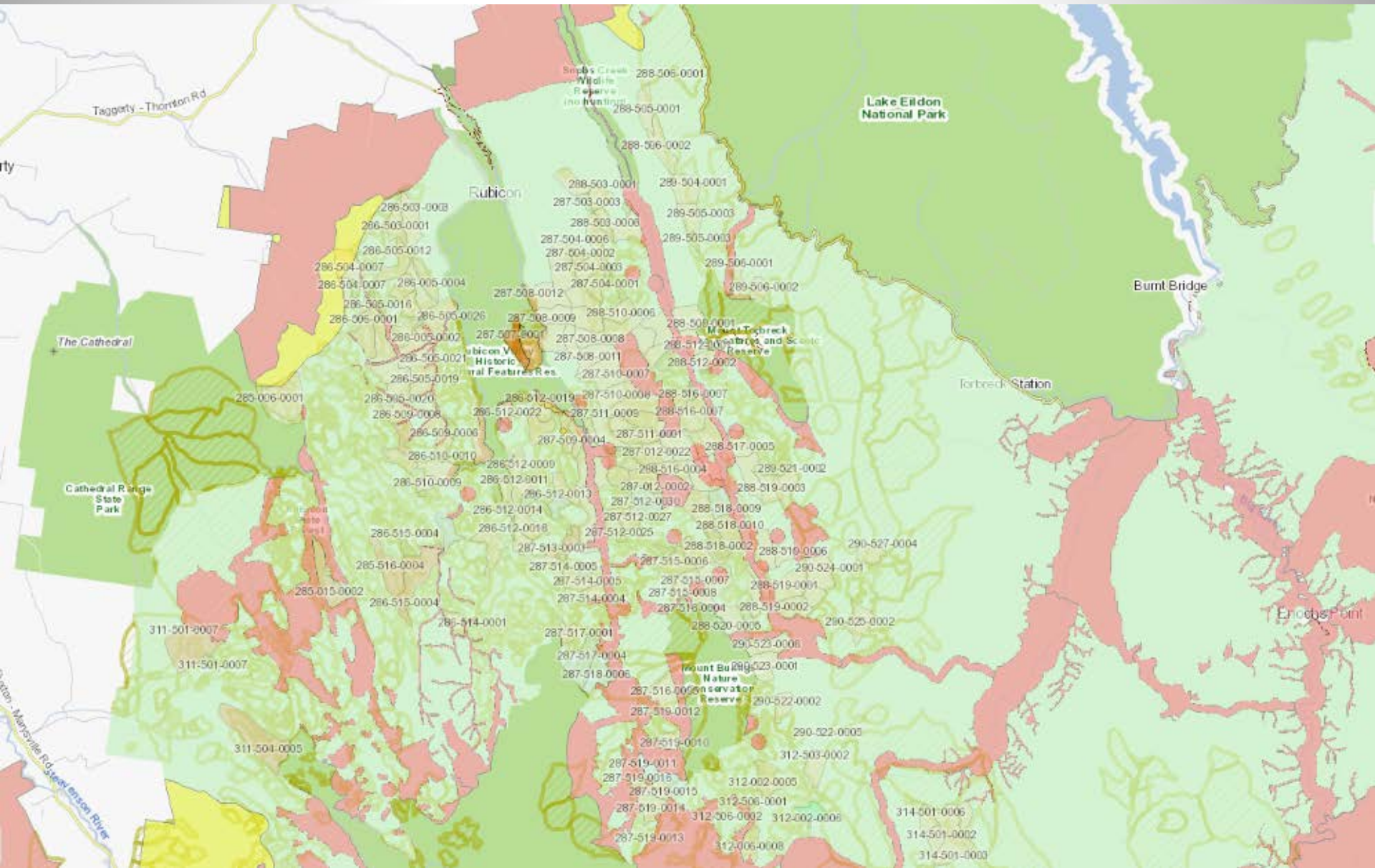
Protect what's left



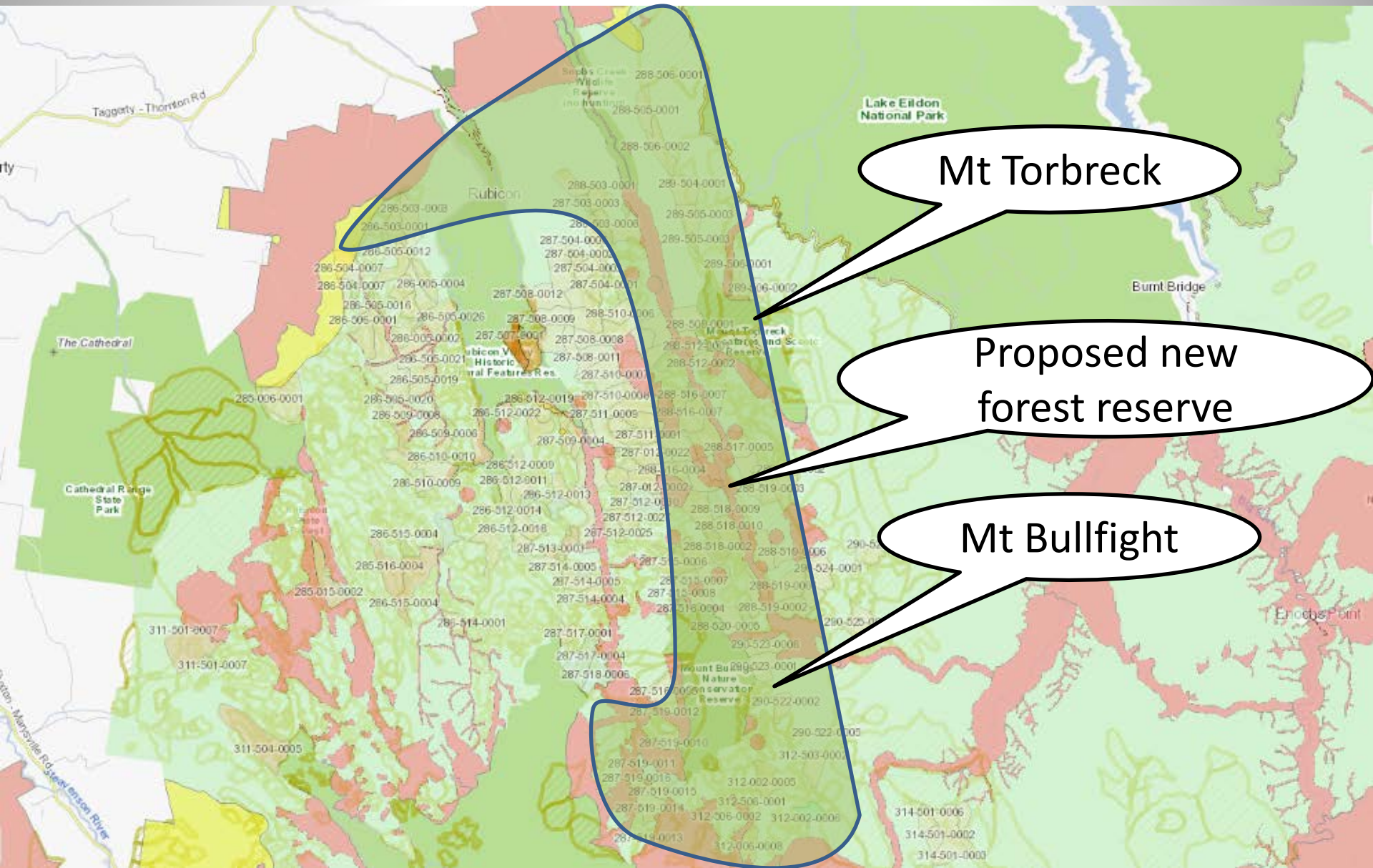
Protect what's left



Protect what's left



Protect what's left



The Blue Range 2015



1400 m

Image © 2014 CNES / Astrium

©2010 Google

How has this happened?

- 2010: Allocation Order set statewide not by FMA
- Overestimates of ash timber volumes
- 2013: DELWP Secretary TRP approval abolished
- Widespread Code of Forest Practice breaches unchecked

VicForests' *Resource Outlook*

- Nil for future bushfires, despite likely loss of 20% of ash forests in next 20 years (VEAC)
- Nil for threatened wildlife apart from LBP
- Nil for CoFP improvements
- Nil for global warming
- Full effect not until 2020
- Minimal additions to reserve system
- Logging old-growth forests (>117 yrs) ends but not younger old-growth (100-117 yrs)

Timber jobs: Like the forest, soon gone

- 44 jobs lost in 2010 when Gunns mill in Alexandra closed and timber allocation moved to Heyfield
- Fewer than 100 FTE timber industry jobs remaining in Murrindindi Shire
- Most will be gone when Central FMA forests logged out
- Some (eg. forest road construction and maintenance) could readily cross to new ecotourism economy

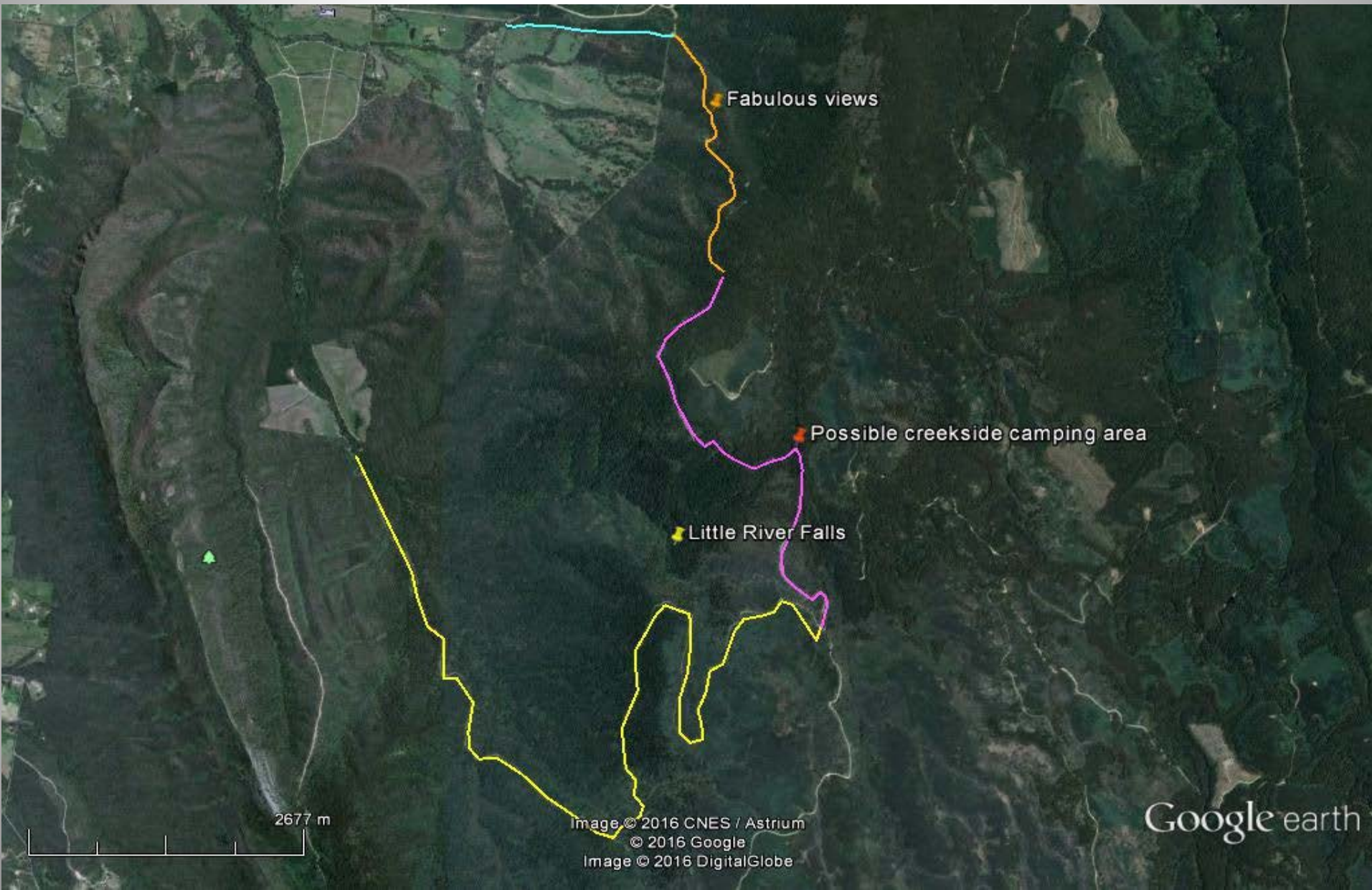
But many others impacted already

- Eco Retreats & B&Bs e.g.
 - Woodlands Rainforest Retreat
- Ecotourism businesses e.g.
 - Rubicon Valley Horseriding
- Outdoor Education
 - OEG (Rubicon and Marysville)
 - Camp Jungai
- Caravan Parks
- Toolangi Forest Discovery Centre

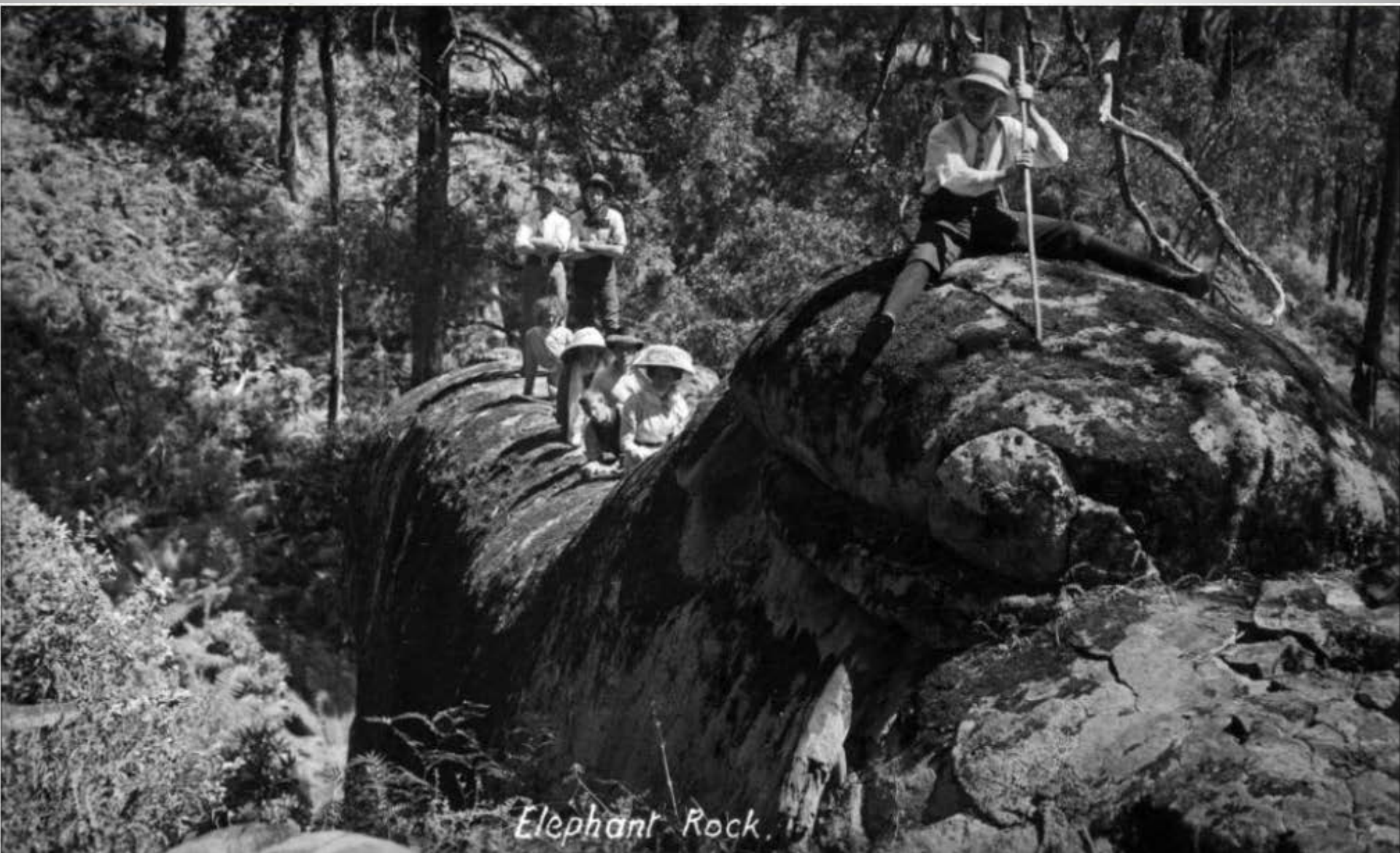
New tourism opportunities beckon

- Scenic drives & walking tracks
- Haulage line tourist development with AGL
- Interpretive trails and signage
- Guided forest tours
- Improve public transport (bus route 684)

New scenic route via Cathedral Range



Elephant Rock, 1911

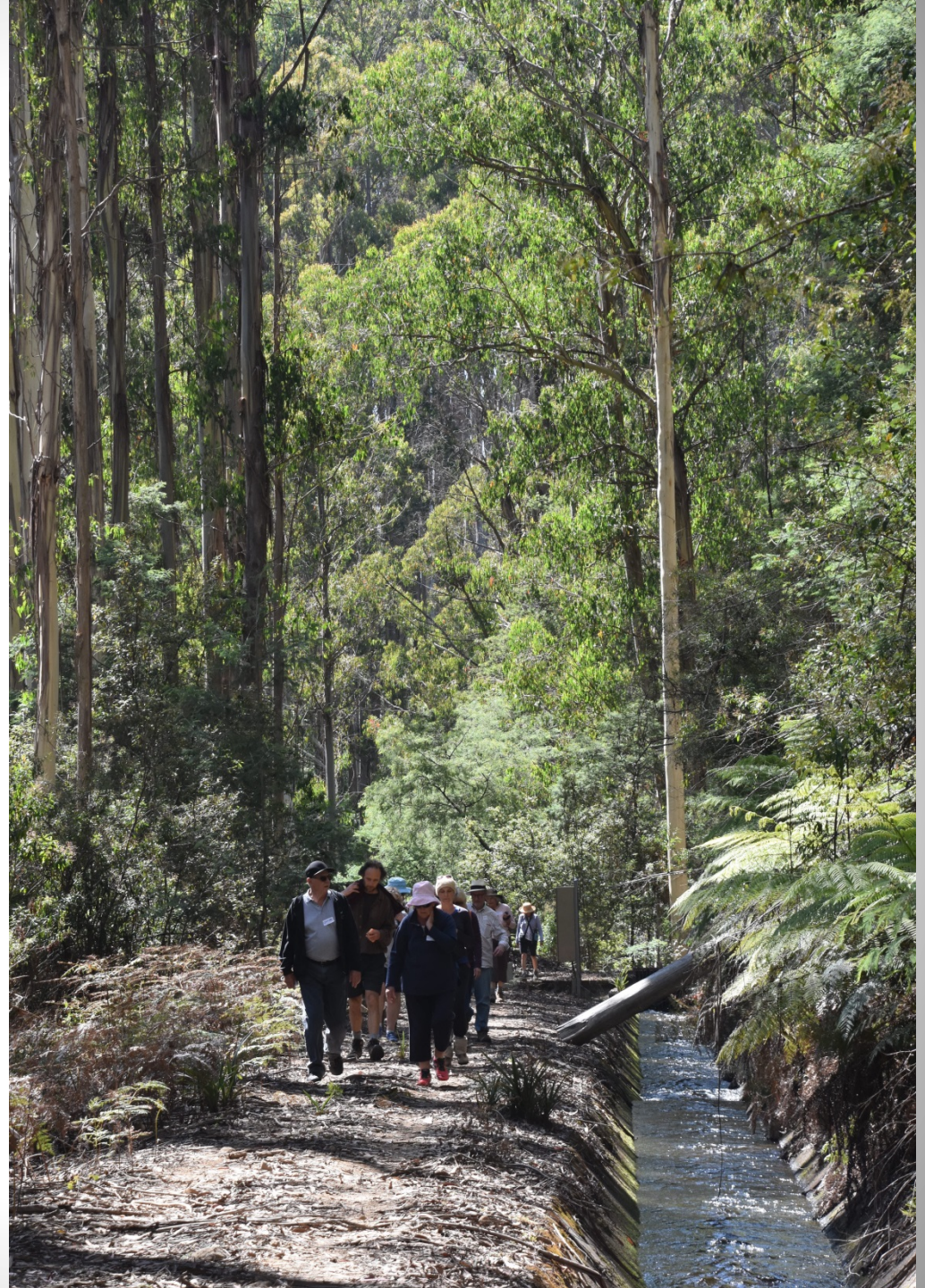


Elephant Rock.

RFPG tour to Rubicon Valley Historic Area



RFPG tour:
Rubicon
Power
Scheme
aqueduct





What we seek

Cease logging Rubicon State Forest for 10 years

Failing that

1. Immediate 2 year logging moratorium in Rubicon State Forest pending outcome of VEAC reviews of:
 - reserve system extensions
 - Code of Forest Practice (CoFP)
2. Independent monitoring & enforcement of CoFP
3. Audit VicForest's *Resource Outlook*
4. Revise Allocation Order, specify by FMA
5. Local timber industry transition strategy

Transition Strategy

- Hardwood plantations: from pulpwood to sawlogs – Heyfield mill ideal
- Reinstate Vic farm forestry initiatives
- Press ATO for fair taxation regime for farm forestry
- Fund forest tourist development initiatives within Murrindindi Shire

Plantation pulplogs can be sawn

PROJECT NUMBER: PNB291-1112A

APRIL 2013

Processing methods for production of solid wood products from plantation-grown *Eucalyptus* species of importance to Australia



This report can also be viewed on the FWPA website

www.fwpa.com.au

FWPA Level 4, 10-16 Queen Street,
Melbourne VIC 3000, Australia

T +61 (0)3 9927 3200 F +61 (0)3 9927 3288

E info@fwpa.com.au W www.fwpa.com.au

Farm forestry – 20 yr messmate



Our vision

For the rich biodiversity, cultural heritage and scenic beauty of the forests of Murrindindi Shire to be safeguarded into the future and for these forests to become a tourist mecca to rival the Dandenongs and Blue Mountains

Respect this Land

*“No-one owns Mother Earth.
Mother Earth looks after us and
we look after Mother Earth”*

Uncle Roy Patterson,

Taungurung elder,

May 2016



Tourism, recreation and a healthy environment - key to a sustainable, prosperous future for Murrindindi