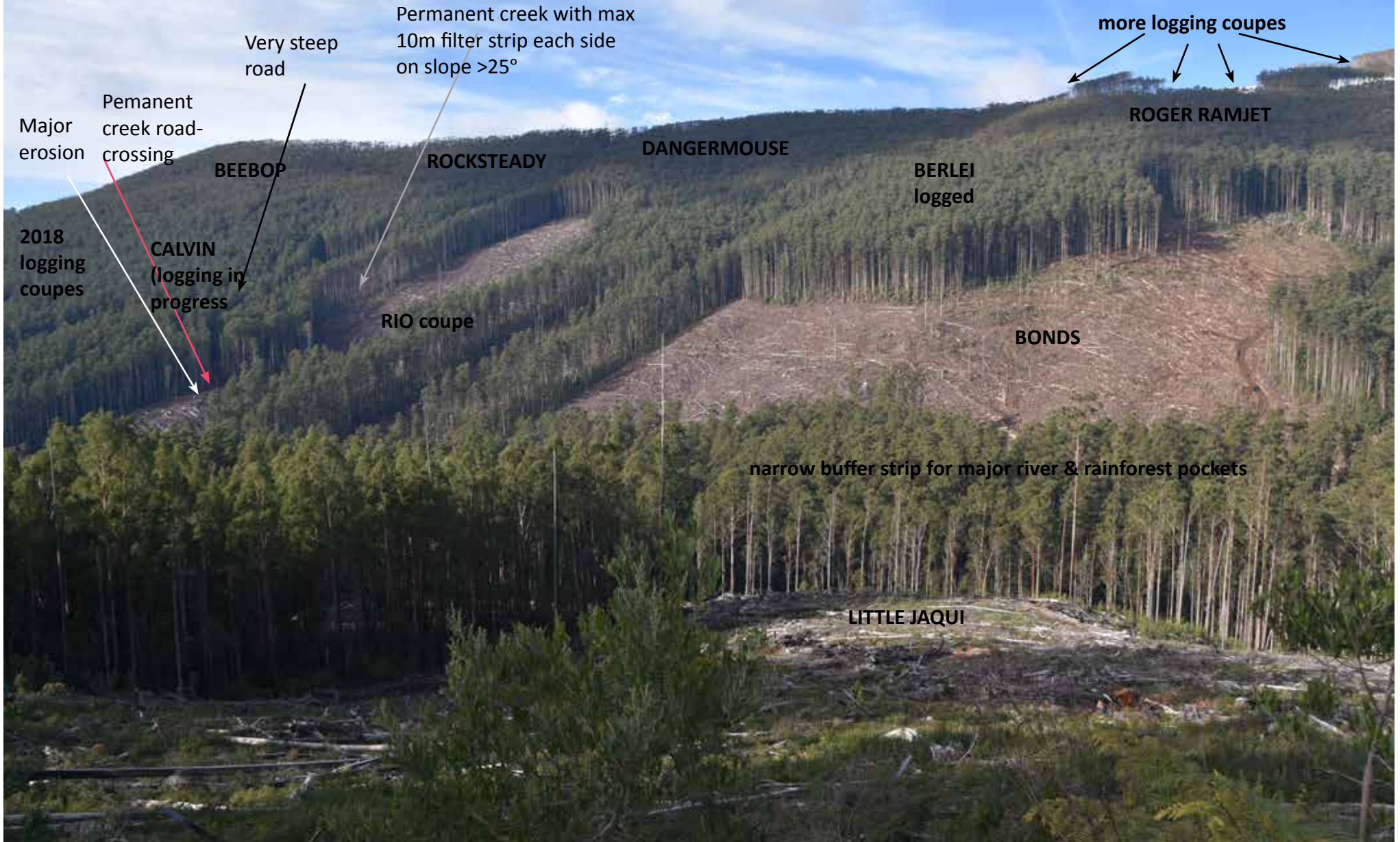
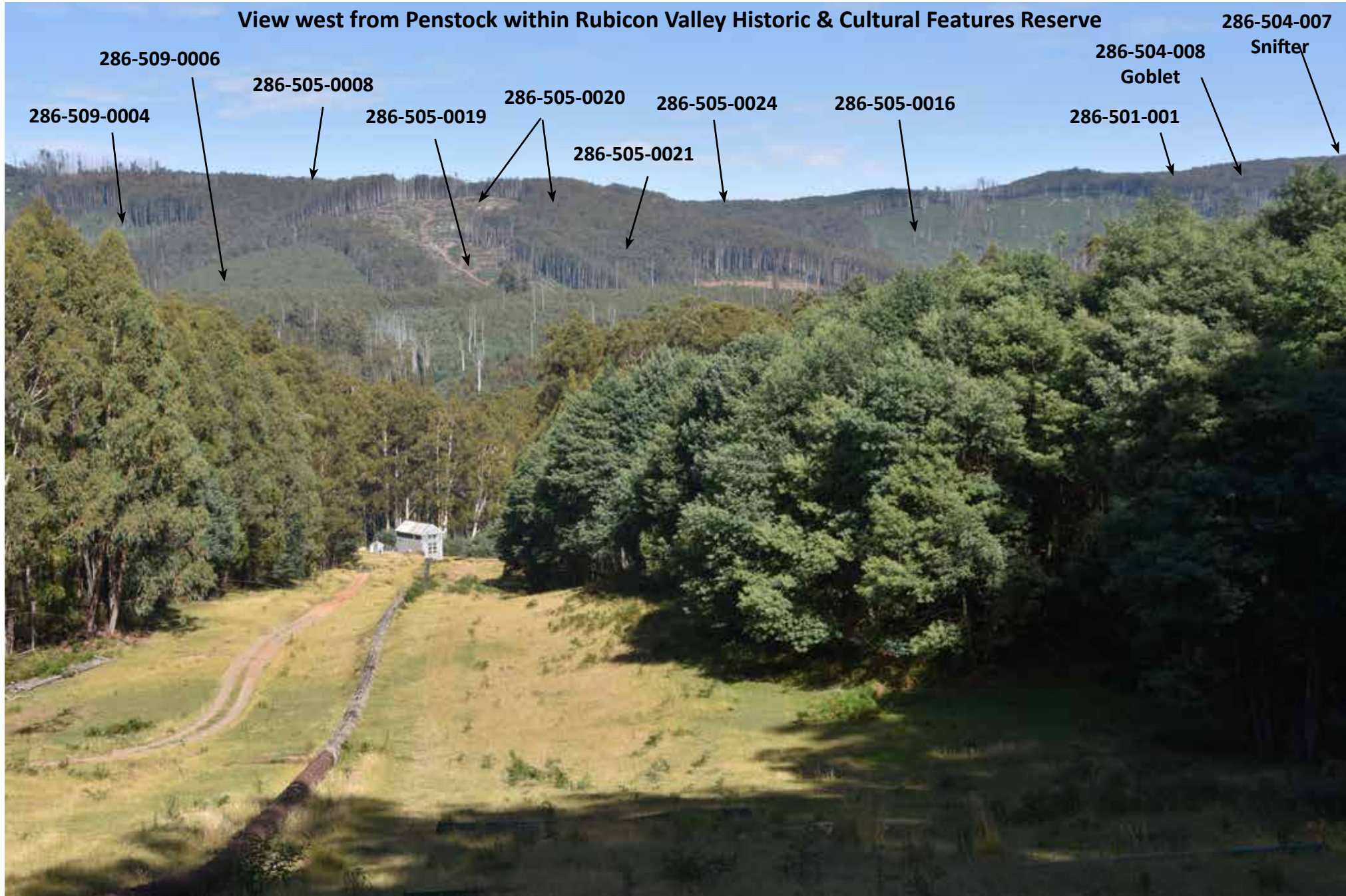


**View of current and proposed coupes from Rubicon Forest Tourist Road which will result in significant impacts on biodiversity and views**



**View west from Penstock within Rubicon Valley Historic & Cultural Features Reserve**



286-509-0006

286-505-0008

286-505-0020

286-505-0024

286-505-0016

286-504-008

Goblet

286-504-007

Snifter

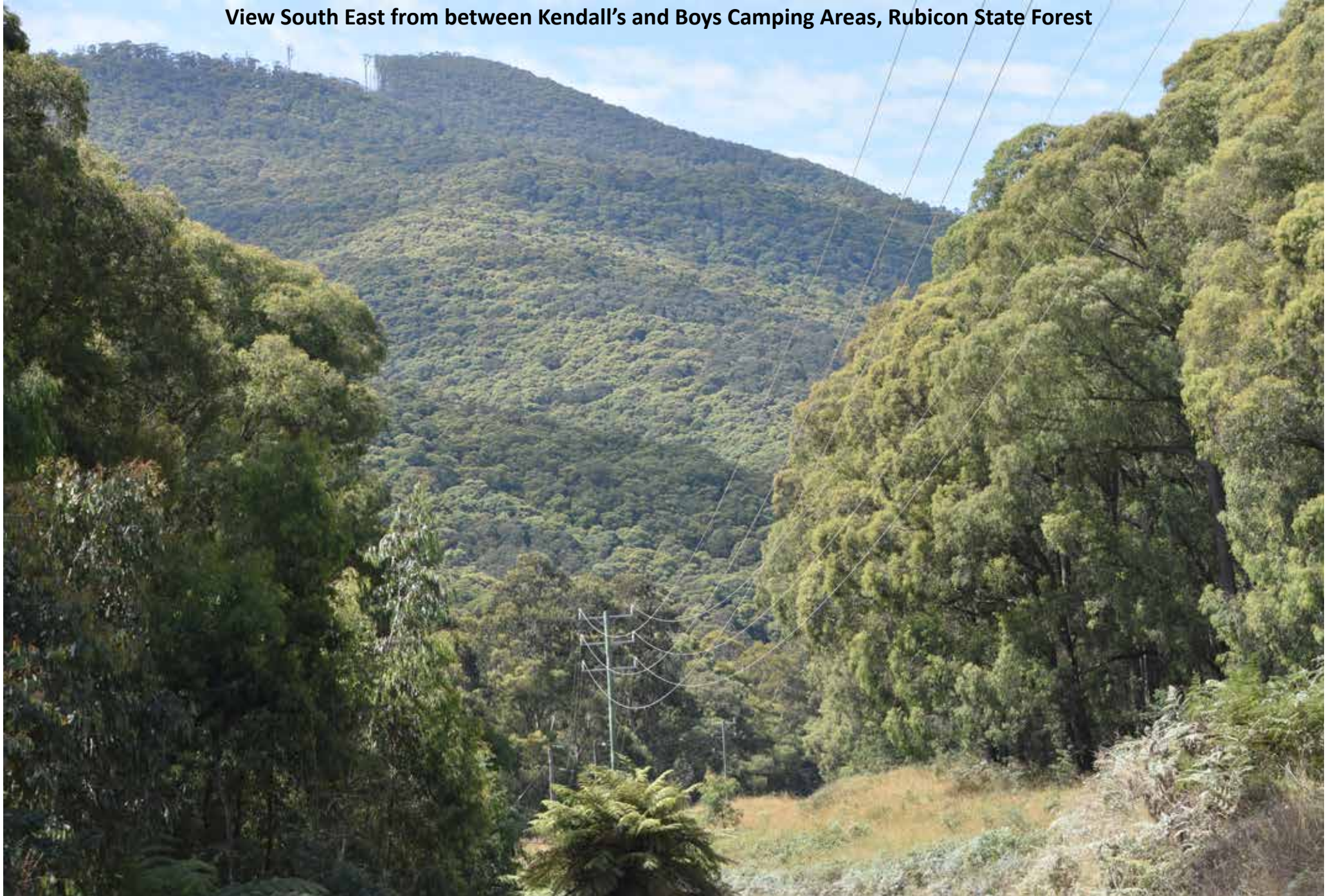
286-509-0004

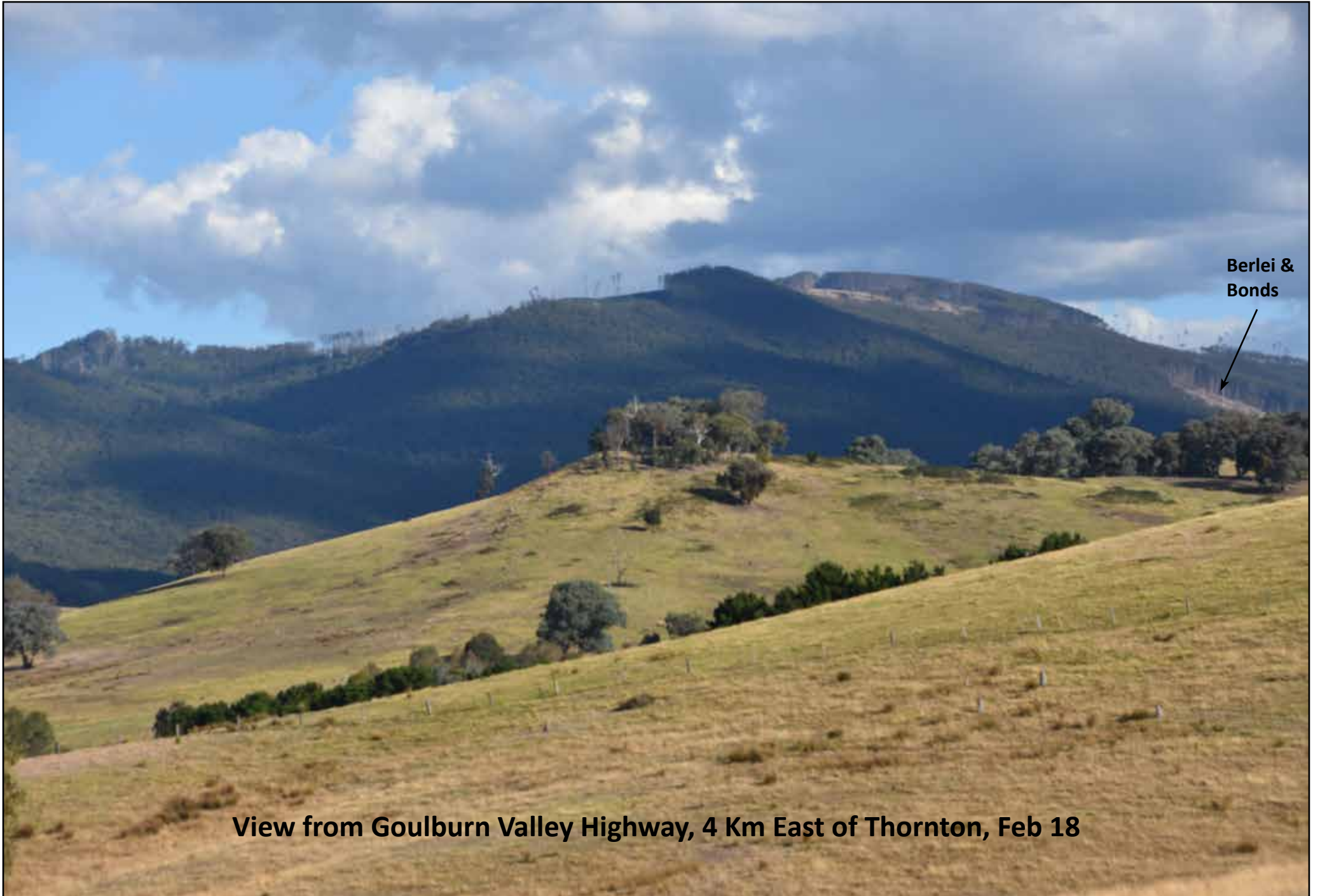
286-505-0019

286-505-0021

286-501-001

**View South East from between Kendall's and Boys Camping Areas, Rubicon State Forest**





**Berlei &  
Bonds**

**View from Goulburn Valley Highway, 4 Km East of Thornton, Feb 18**